



I G N I T E T A L K

Comparative Analysis of Baseline and Advanced Boosting Models for Flood-Prone Area Prediction and Model Explainability: A Case Study from the Upper Draa Basin, Morocco

PRESENTED BY : LAHCEN GOUMGHAR

Co-authored by : EL MANSOURI BOUABID; SOUFIANE HAJAJ

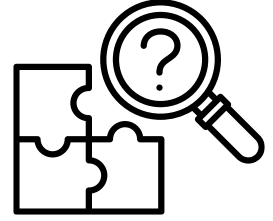
GFP ANNUAL CONFERENCE, SEPTEMBER 15-17 2025

Historic floods in the Sahara Desert

A year's worth of rain in 48 hours



I N T R O D U C T I O N



R e s e a r c h G a p s

- Few comparative studies on multiple boosting models
- Low focus on explainability — most studies prioritize accuracy over understanding variable roles.

R o l e o f M a c h i n e L e a r n i n g

AI/ML techniques (e.g., ANN, DT) offer a promising solution:

- Handle complex, non-linear relationships
- Improve predictive accuracy
- Support rapid, non-destructive assessments

B a c k g r o u n d

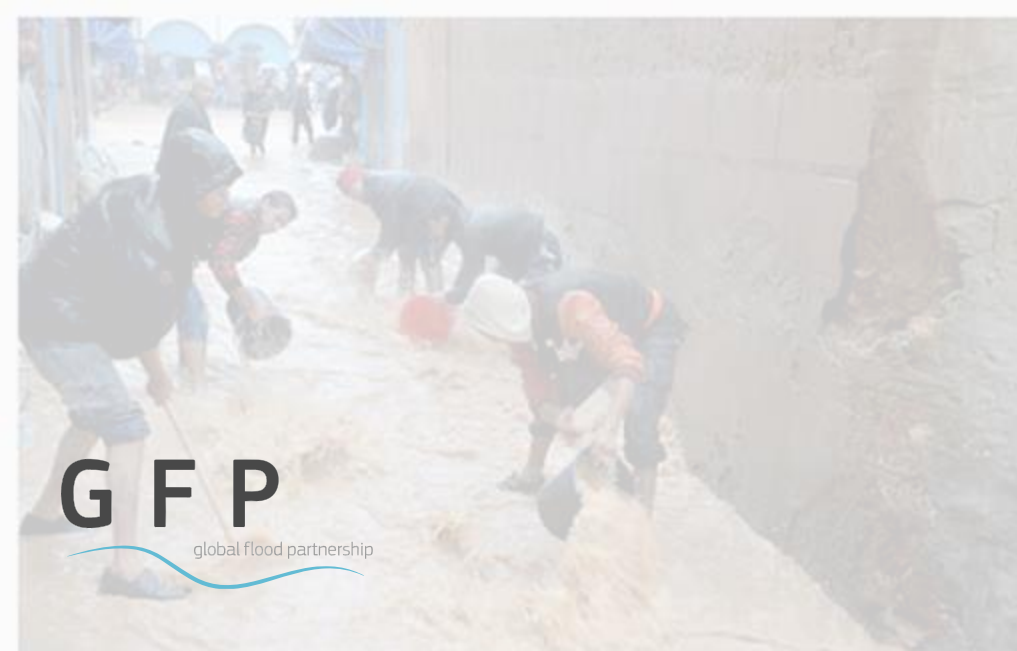
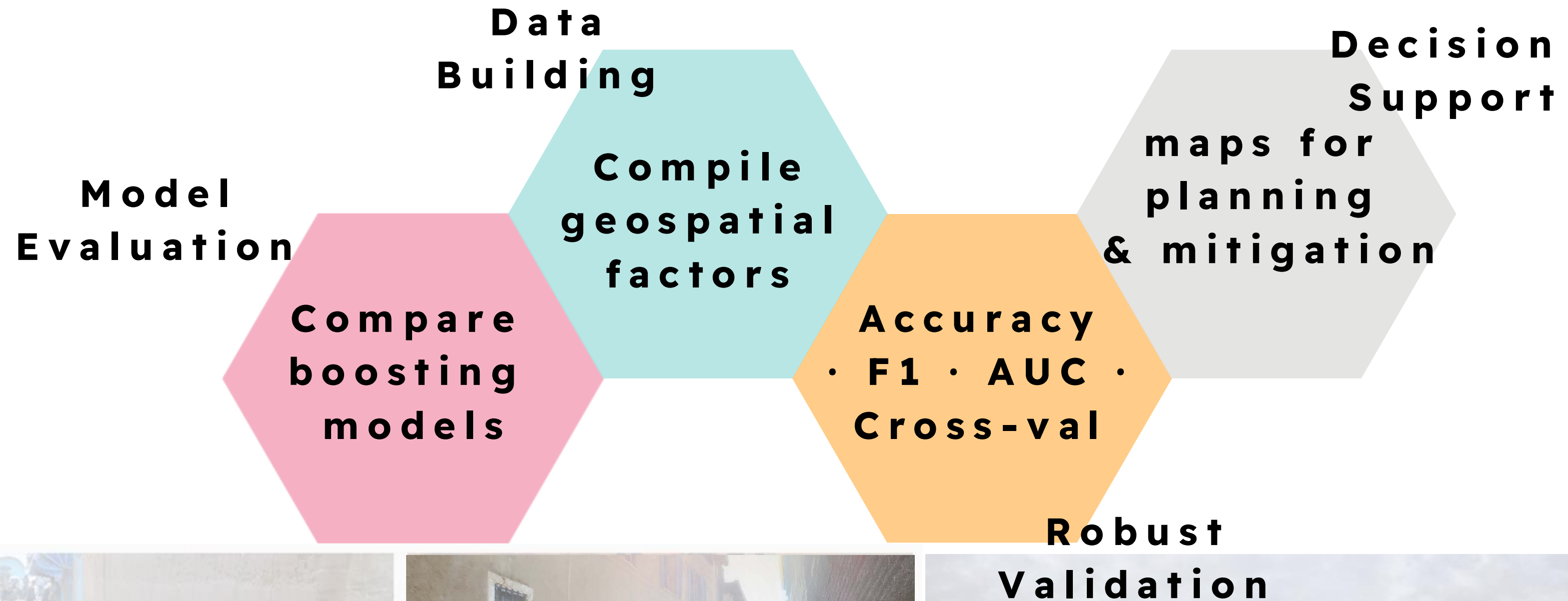
In the Upper Drâa Basin, irregular and intense rainfall events in semi-arid regions greatly increase flood vulnerability.

Floods cause major socio-economic and environmental losses, justifying the need to improve flood susceptibility mapping.

Integrating machine learning (ML) with GIS and remote sensing enhances flood prediction and mapping capabilities.



OBJECTIVES



M E T H O D O L O G Y

Multi-source data compilation:

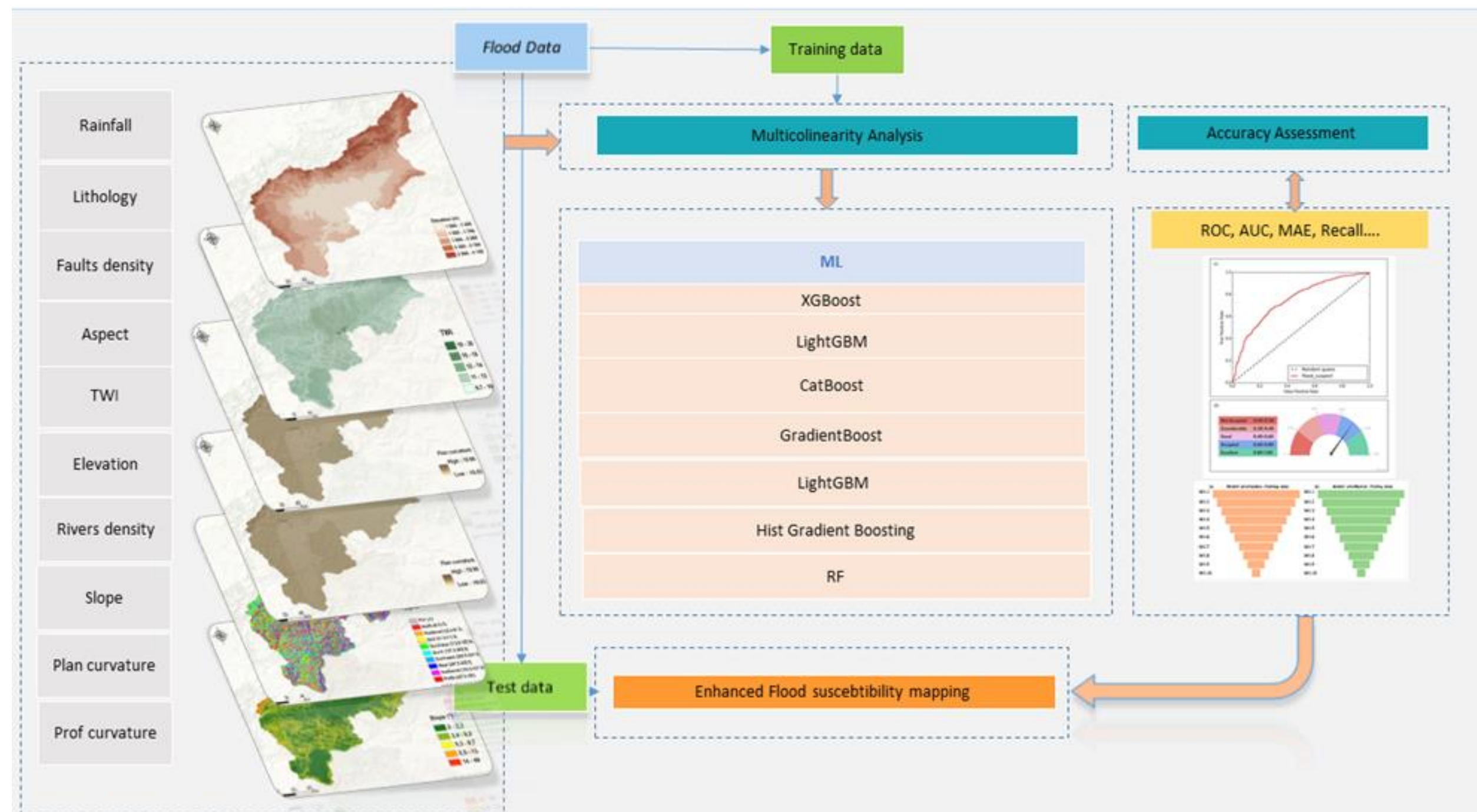
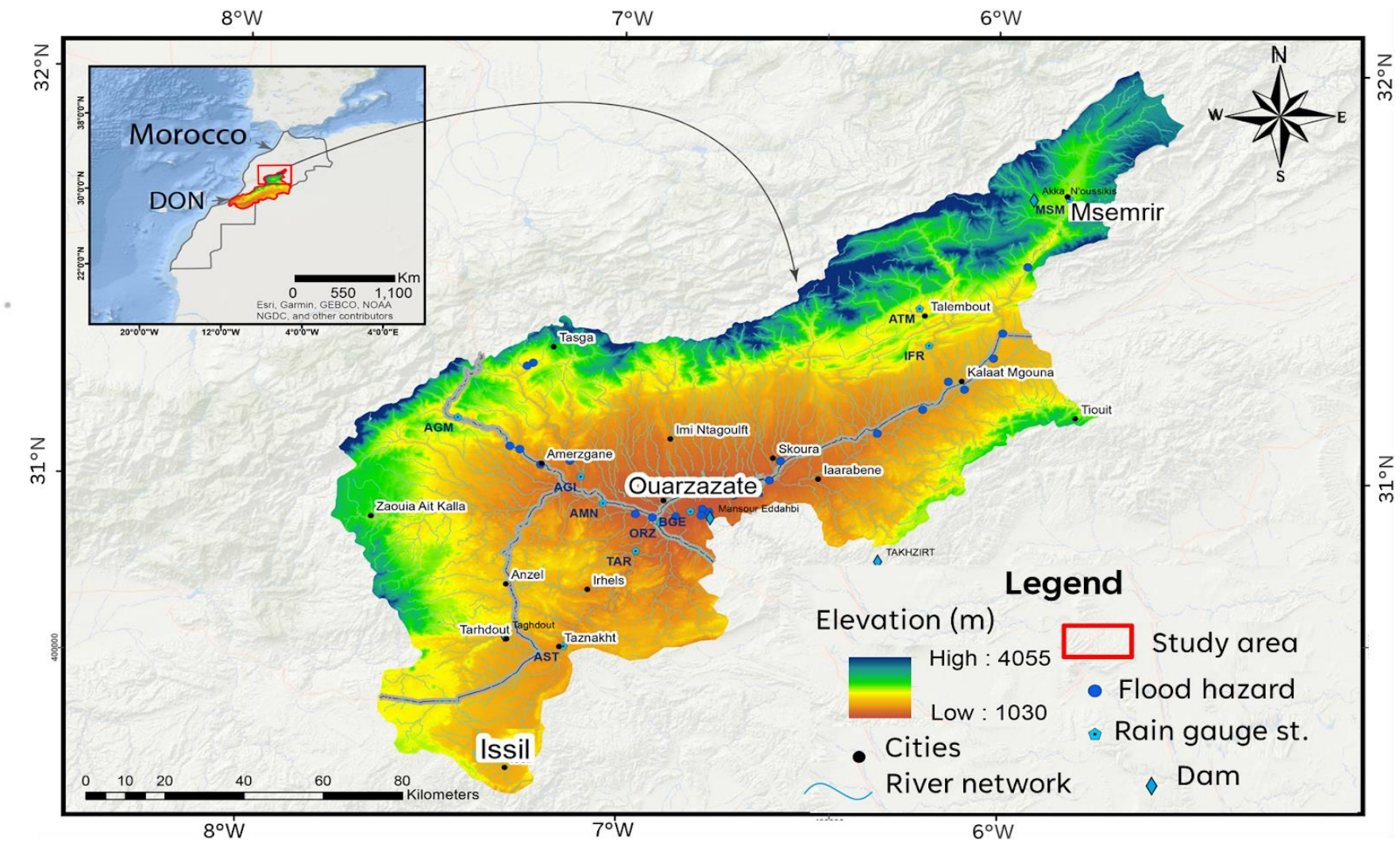


Figure 1. Flow chart of the methodological framework implemented in this study.

Ten conditioning factors were standardized for balanced model training, while the flood inventory from the basin agency and our field visits ensured the spatial reliability of events used for model calibration and validation.

M E T H O D O L O G Y

Localization of our basin



RESULTS

MODEL EVALUATION

$$RMSE = \sqrt{\frac{\sum_{i=1}^n (p_i - q_i)^2}{n}}$$

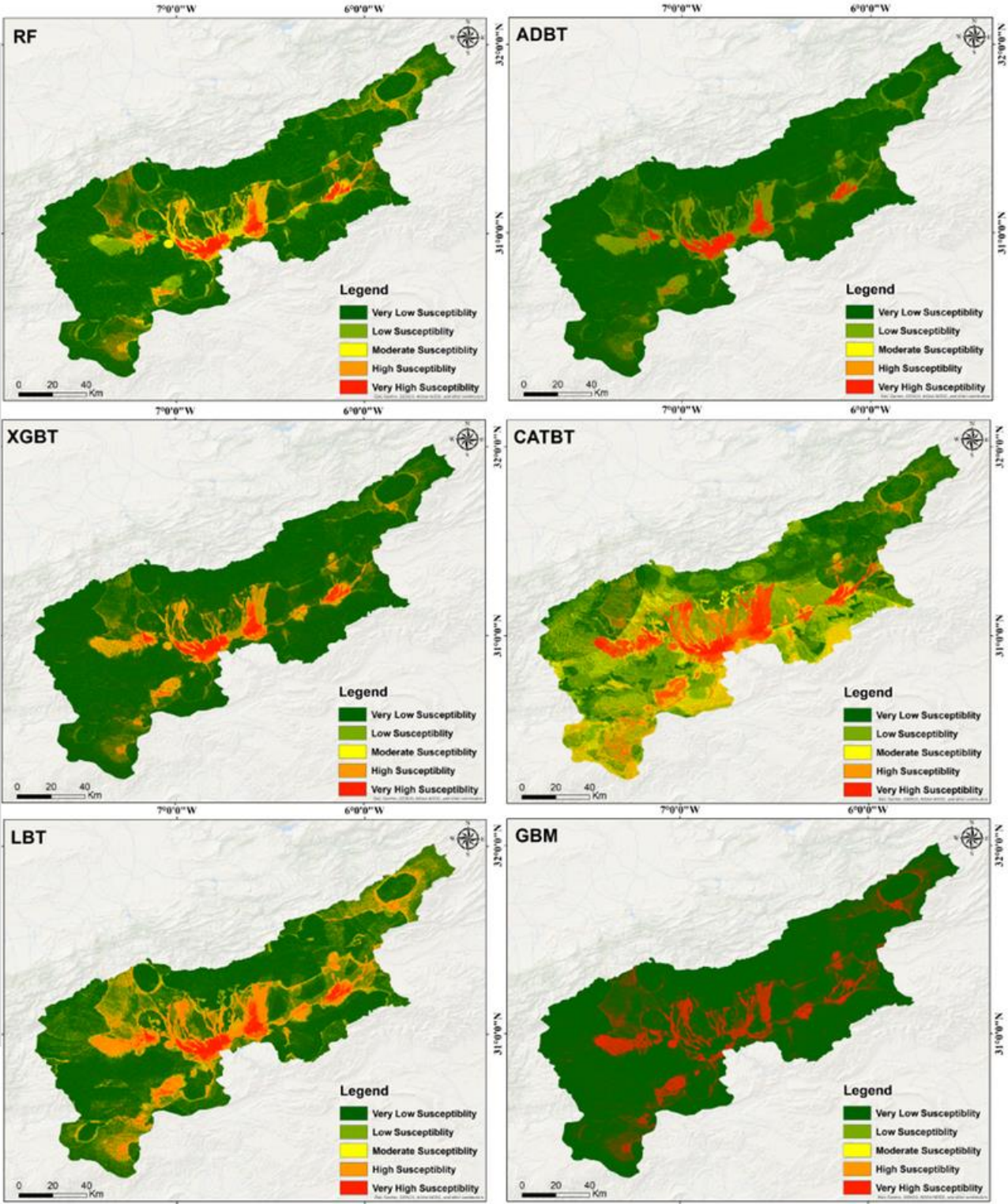
$$MAPE = \frac{1}{n} \sum_{i=1}^n \left| \frac{q_i - p_i}{q_i} \right| \times 100$$

$$MAE = \frac{\sum_{i=1}^n |p_i - q_i|}{n}$$

Table 1 Performance of the Tested Boosting Models

Model ML	MSE	RMSE	Exactitude (%)	F1-score	AUC
(XGBT)	≈0.09	≈0.30	≈90	≈0.76	≈0.80
(LBT)	≈0.09	≈0.30	≈90	≈0.75	≈0.80
(CATBT)	>0.10	>0.31	<88	≈0.70	≈0.78
(HGBT)	0.068	0.262	93.1	0.8	0.833
(RF)	>0.11	>0.33	<85	≈0.65	≈0.75
(ADBT)	>0.11	>0.33	<85	≈0.65	≈0.75

Histogram-
Based
Gradient
Boosting



RESULTS



High-risk zones: Taznakht, Skoura, Ouarzazate (agricultural & urban areas



Best models: XGBoost, LightGBM, HistGB (high accuracy & generalization)



Key factors: River density, TWI, slope, rainfall

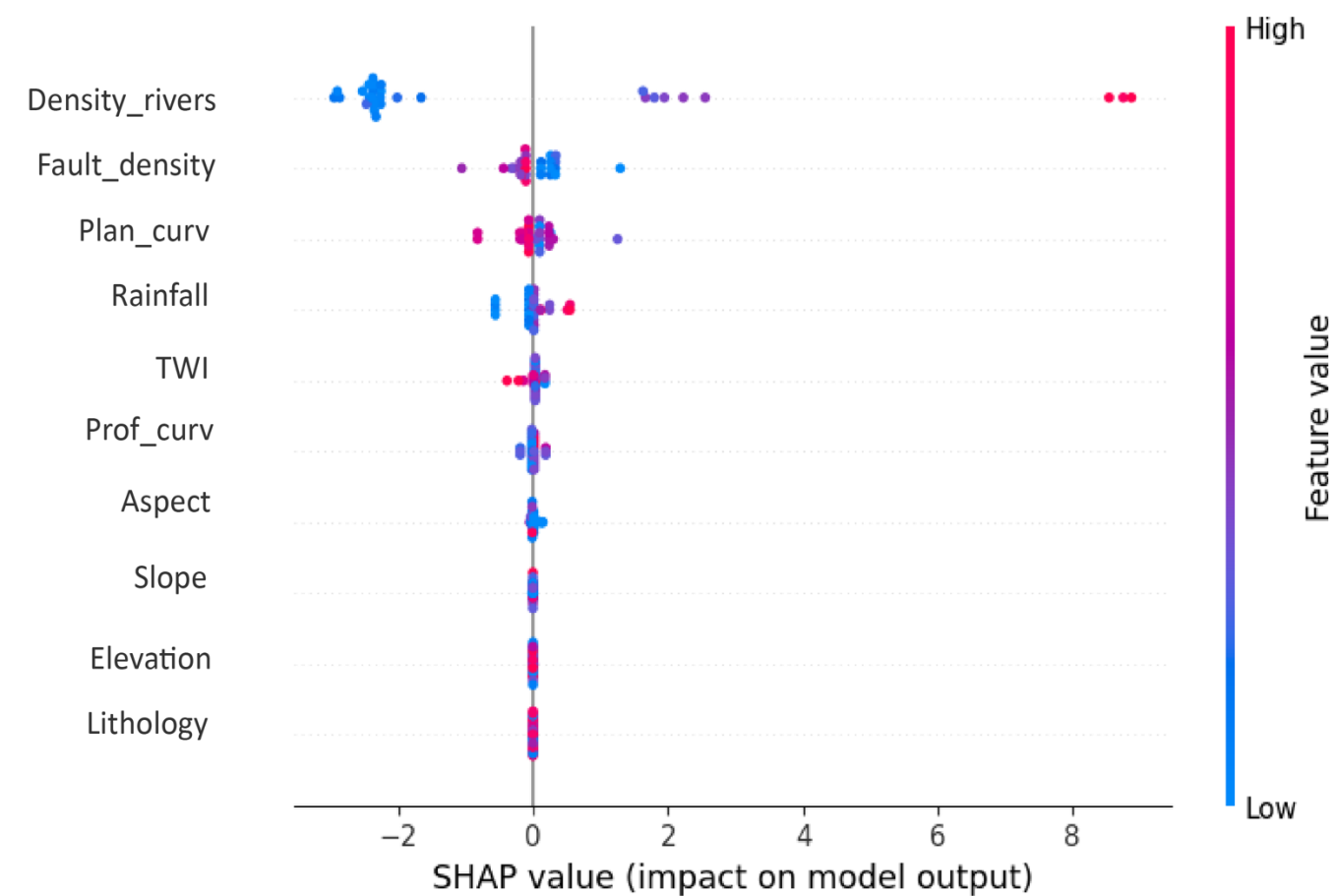


Figure 3. HistGBoost Explainability issued from Shapley Explainability model

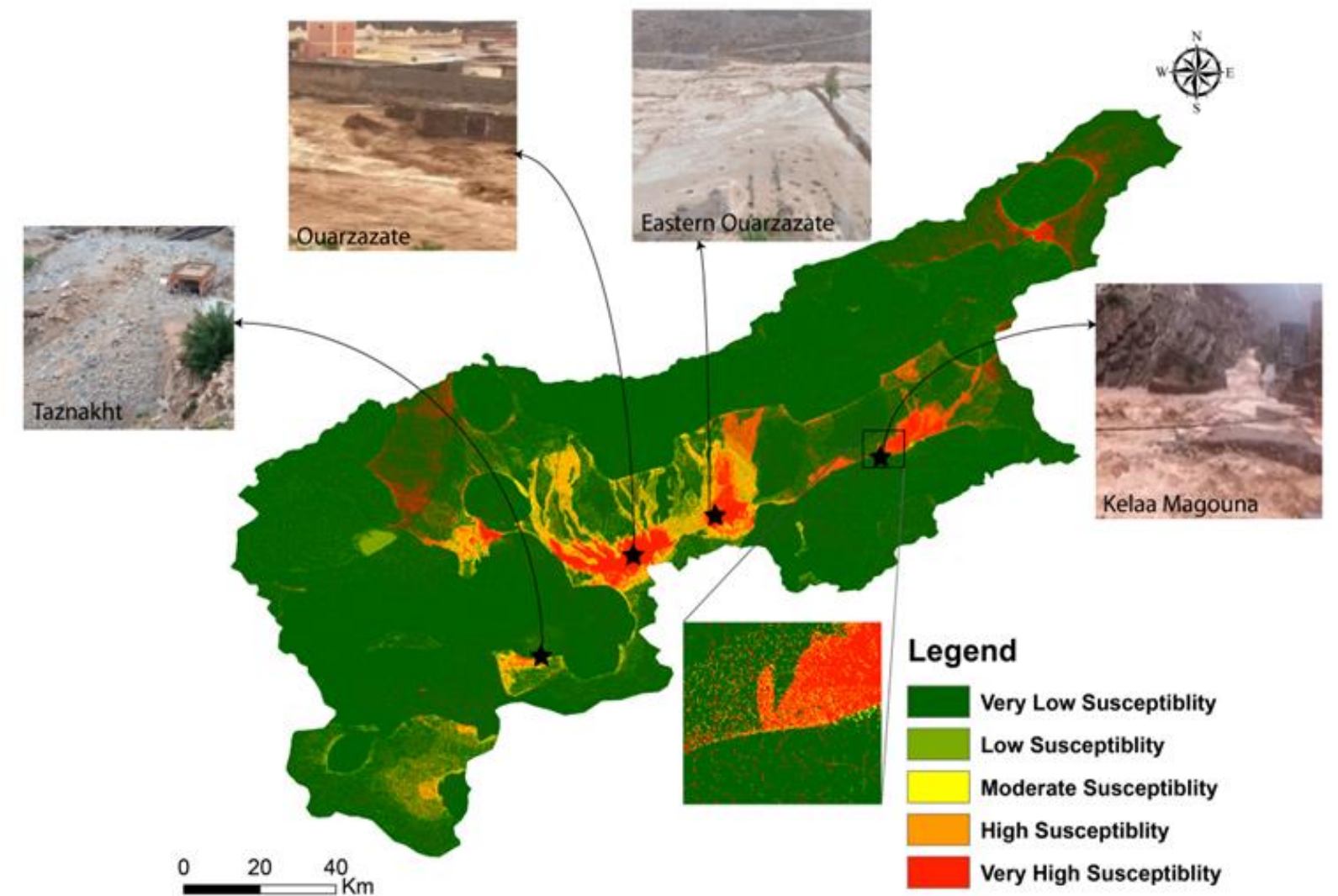


Figure 2. Flood susceptibility mapping in the Upper Draa Basin using the HGBT model, validated by field observations.

Our contribution & Reference bibliographies

1. Hosseini, F. S., Choubin, B., Mosavi, A., Nabipour, N., Shamshirband, S., Darabi, H., & Haghighi, A. T. (2020). Flash-flood hazard assessment using ensembles and Bayesian-based machine learning models: Application of the simulated annealing feature selection method. *Science of The Total Environment*, 711, 135161.
2. Islam, T., Zeleke, E. B., Afroz, M., & Melesse, A. M. (2025). A Systematic Review of Urban Flood Susceptibility Mapping: Remote Sensing, Machine Learning, and Other Modeling Approaches. *Remote Sensing*, 17(3), 524.
- 3, James, G., Witten, D., Hastie, T., & Tibshirani, R. (2013). *An introduction to statistical learning* (Vol. 112). Springer.



Article

Analysis of Baseline and Novel Boosting Models for Flood-Prone Prediction and Explainability: Case from the Upper Drâa Basin (Morocco)

Lahcen Goumghar ^{1,*}, Soufiane Hajaj ^{2,3,*}, Souad Haida ¹, Malika Kili ¹, Abdelaziz Mridekh ¹,
Younes Khandouch ⁴, Abdessamad Jari ², Abderrazak El Harti ² and Bouabid El Mansouri ¹

EEET **ECOLOGICAL ENGINEERING
& ENVIRONMENTAL TECHNOLOGY**
ISSN 2719-7050

Author *Lahcen Goumghar*

Integrating geospatial data and analytic hierarchy process for flood-prone zones mapping in the Upper Draa basin, Morocco

Lahcen Goumghar, Rahma Fri, Soufiane Hajaj, Soufiane Taia, Bouabid El Mansouri

Ecol. Eng. Environ. Technol. 2025; 4:251-268

DOI: <https://doi.org/10.12912/27197050/201160>

JEE **Journal of Ecological Engineering**

Journal of Ecological Engineering 2023, 24(8), 62–83

<https://doi.org/10.12911/22998993/165958>

ISSN 2299–8993, License CC-BY 4.0

Received: 2023.04.03

Accepted: 2023.06.16

Published: 2023.06.28

A Comparative Analysis of Analytical Hierarchy Process and Fuzzy Logic Modeling in Flood Susceptibility Mapping in the Assaka Watershed, Morocco

Achraf Khaddari^{1*}, Abdessamad Jari², Saïd Chakiri¹, Hassan El Hadi³, Allal Labriki³,
Soufiane Hajaj², Lahcen Goumghar⁴, Abderrazak El Harti², Mohamed Abioui^{5,6}

THANK YOU

G F P

global flood partnership



UNITED NATIONS
Office for Outer Space Affairs

ECMWF

GOUMGHAR LAHCEN



Address : **Rouyn Noranda, Canada**

Current position : **PhD student in Ibn Tofail University;**
M.sc UQAT University

Field of expertise : **Water management, and environnement**

Current affiliation : **Ibn Tofail, and UQAT University**

Linkdin : **<https://www.linkedin.com/in/lg3/>**

