

Geological Modeling: Deterministic and Stochastic Models

Irina Overeem

Community Surface Dynamics Modeling System

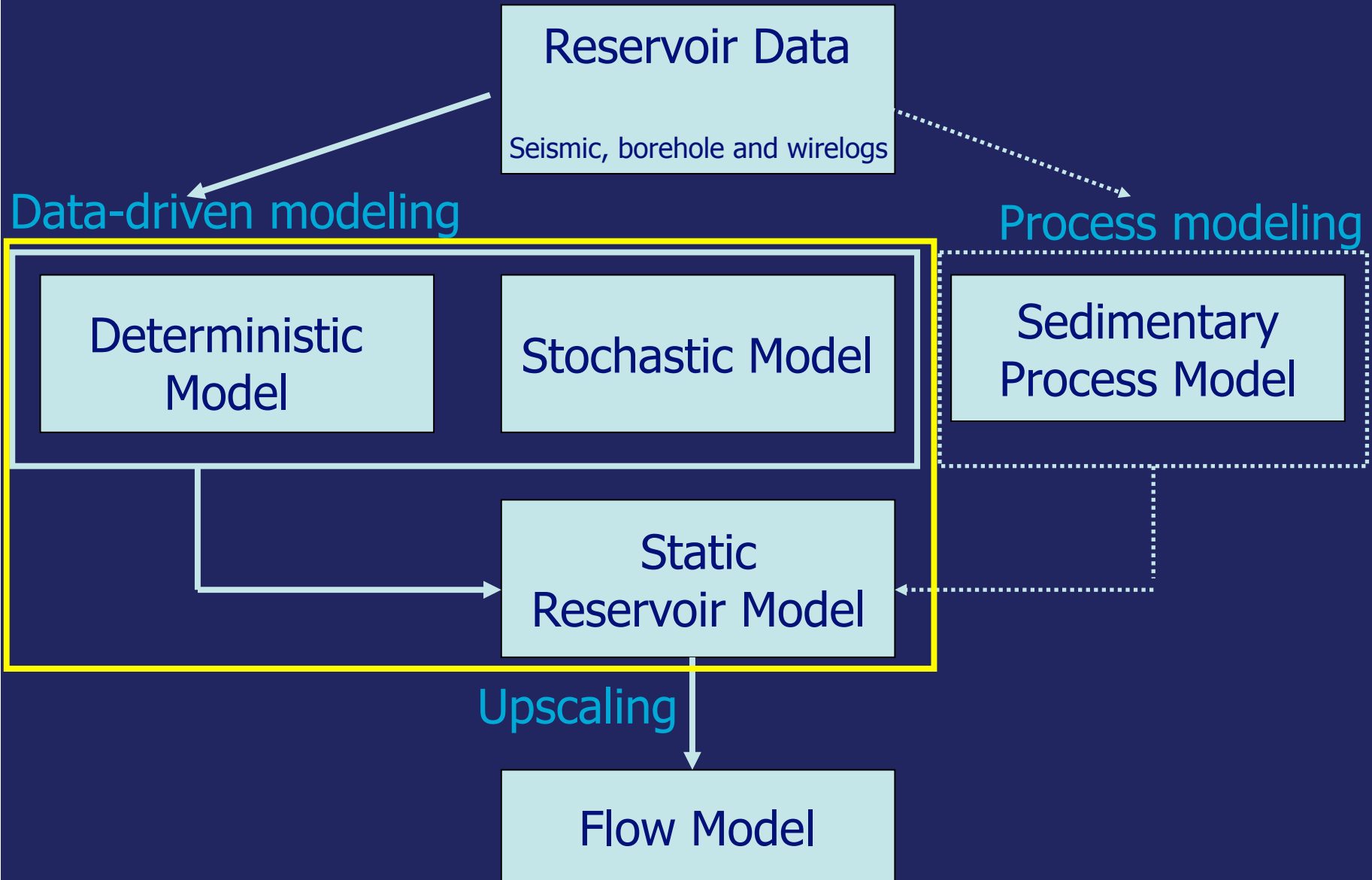
University of Colorado at Boulder

September 2008

Course outline 1

- **Lectures by Irina Overeem:**
 - Introduction and overview
 - **Deterministic and geometric models**
 - Sedimentary process models I
 - Sedimentary process models II
 - Uncertainty in modeling
- **Lecture by Overeem & Teyukhina :**
 - Synthetic migrated data

Geological Modeling: different tracks



Deterministic and Stochastic Models

- **Deterministic model** - A mathematical model which contains no random components; consequently, each component and input is determined exactly.
- **Stochastic model** - A mathematical model that includes some sort of random forcing.
- In many cases, stochastic models are used to simulate deterministic systems that include smaller- scale phenomena that cannot be accurately observed or modeled. A good stochastic model manages to represent the average effect of unresolved phenomena on larger-scale phenomena in terms of a random forcing.

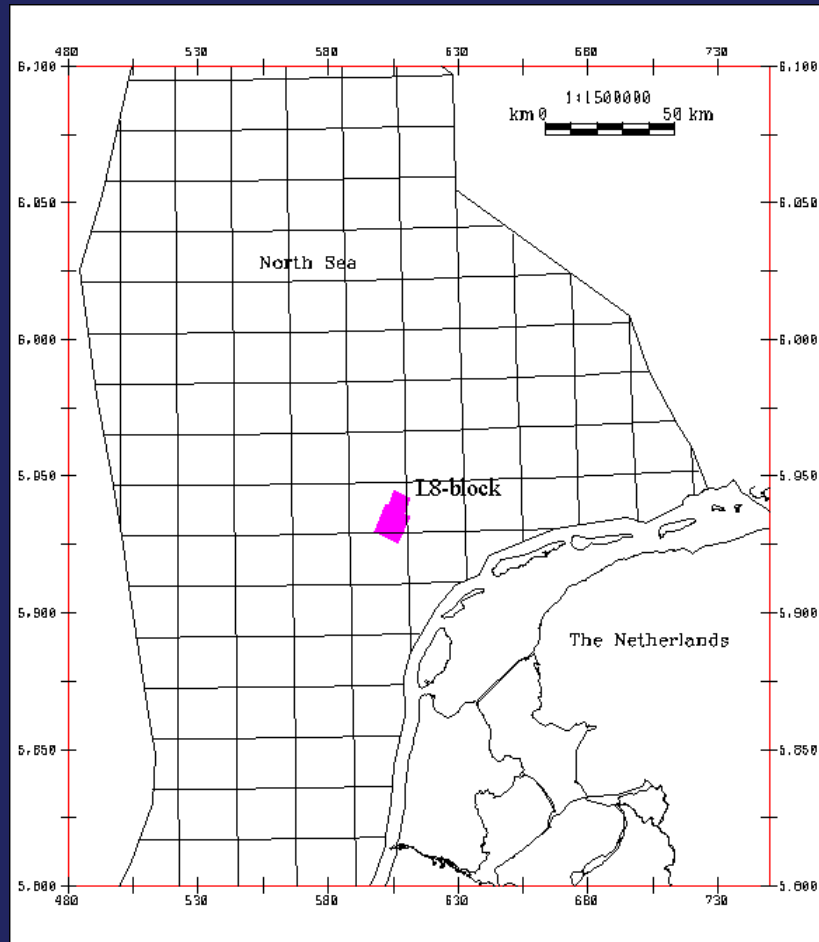
Deterministic geometric models

- Two classes:
 - Faults (planes)
 - Sediment bodies (volumes)
- Geometric models conditioned to seismic
- QC from geological knowledge

Direct mapping of faults and sedimentary units from seismic data

- Good quality 3D seismic data allows recognition of subtle faults and sedimentary structures directly.
- Even more so, if (post-migration) specific **seismic volume attributes** are calculated.
- Geophysics Group at DUT worked on methodology to extract 3-D geometrical signal characteristics directly from the data.

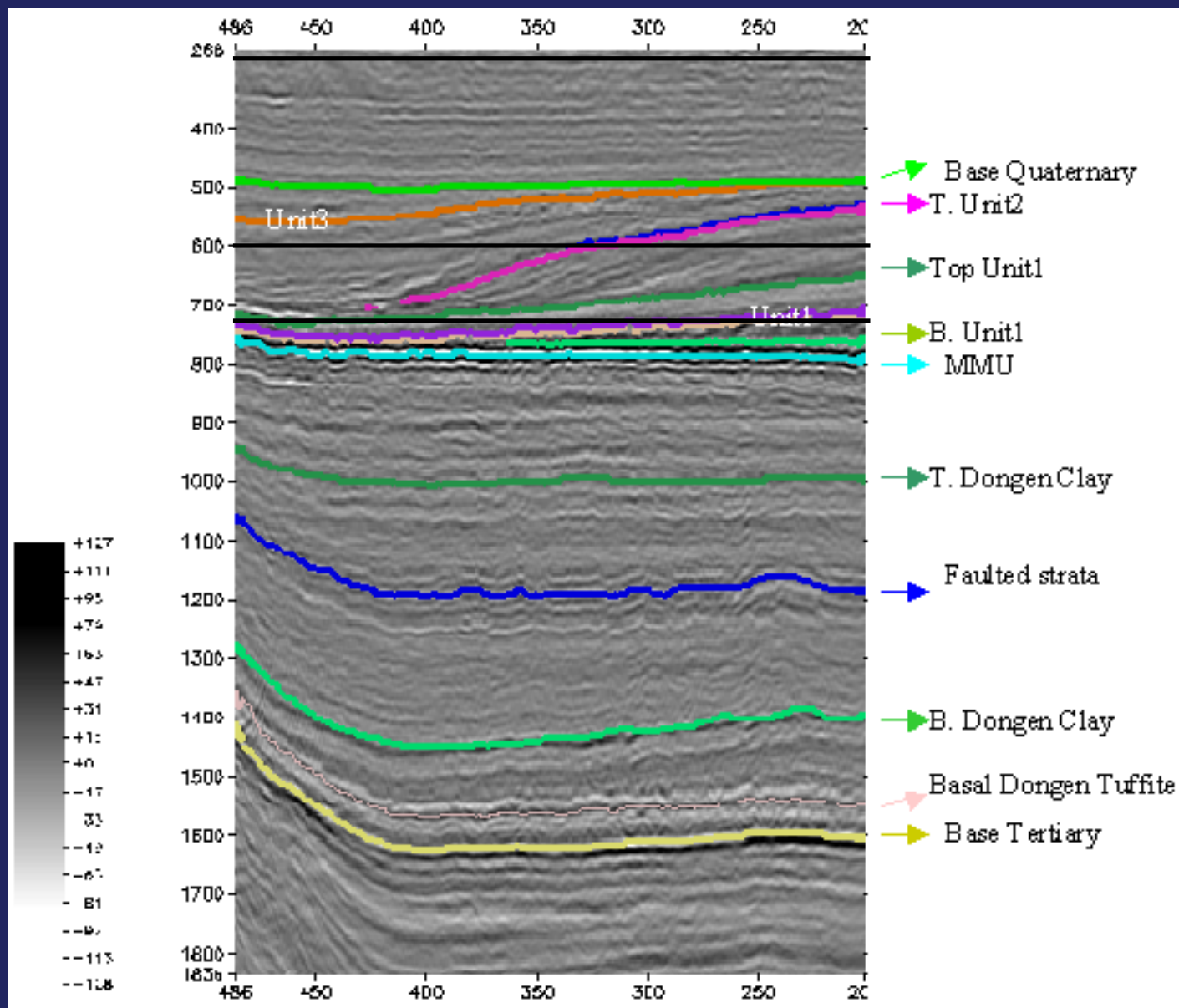
L08 Block, Southern North Sea



Cenozoic succession in the Southern North Sea consists of shallow marine, delta and fluvial deposits.

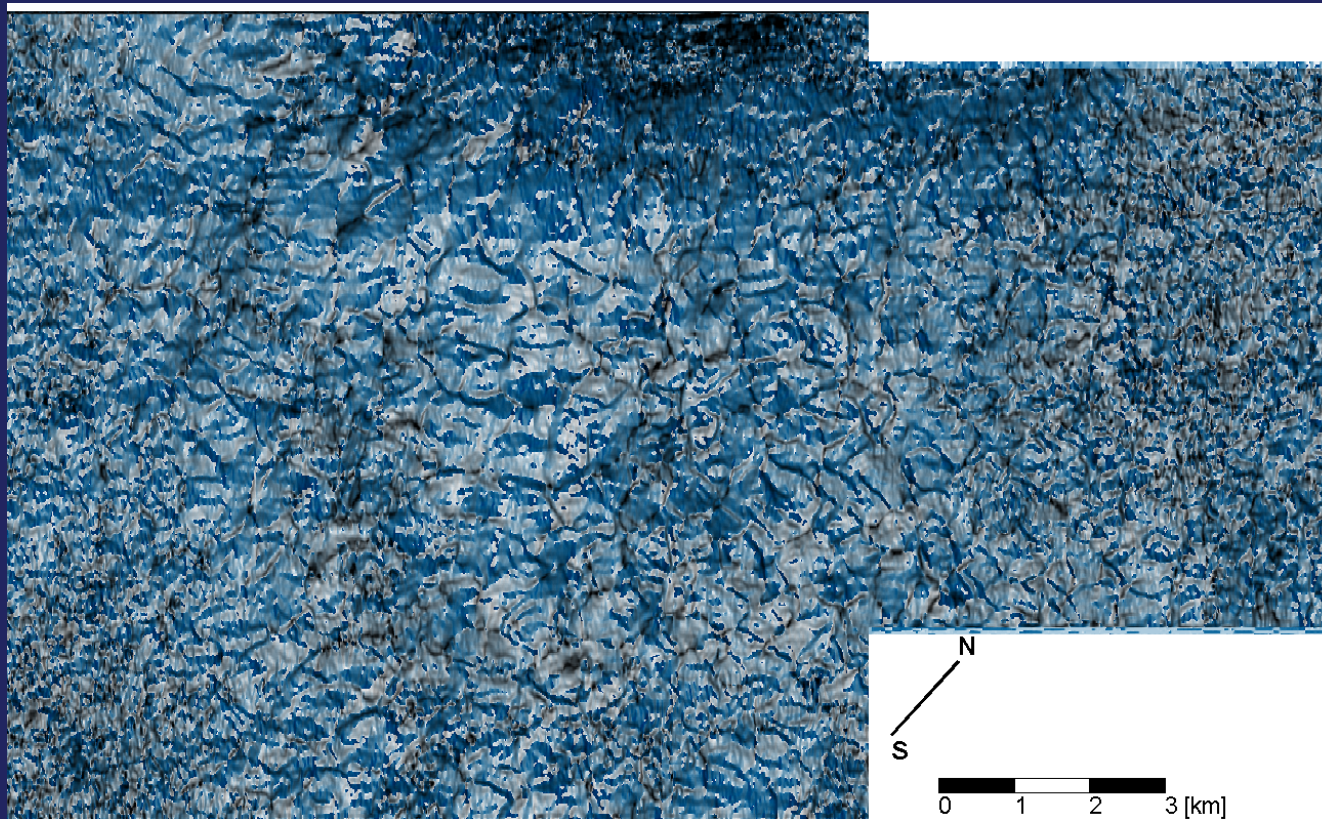
Target for gas exploration?

Seismic volume attribute analysis of the Cenozoic succession in the L08 block, Southern North Sea. Steeghs, Overeem, Tigrek, 2000. Global and Planetary Change, 27, 245–262.



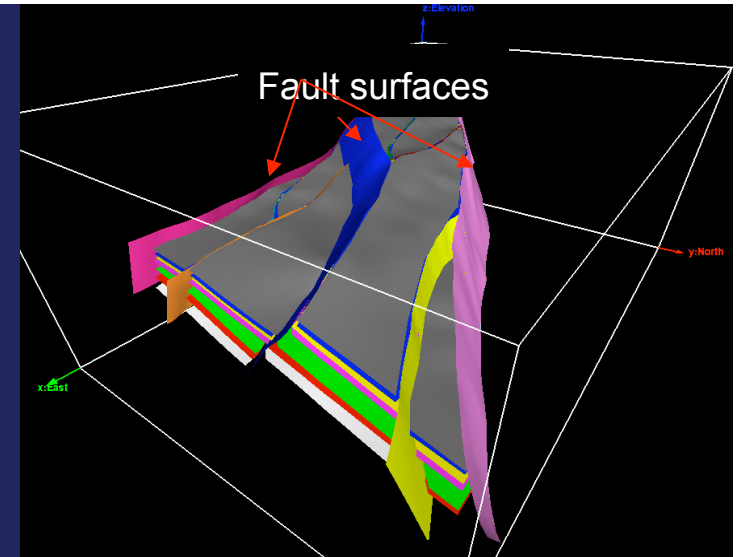
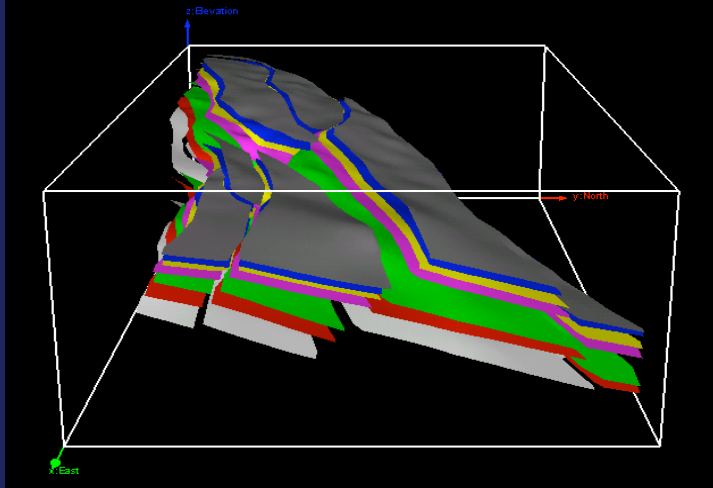
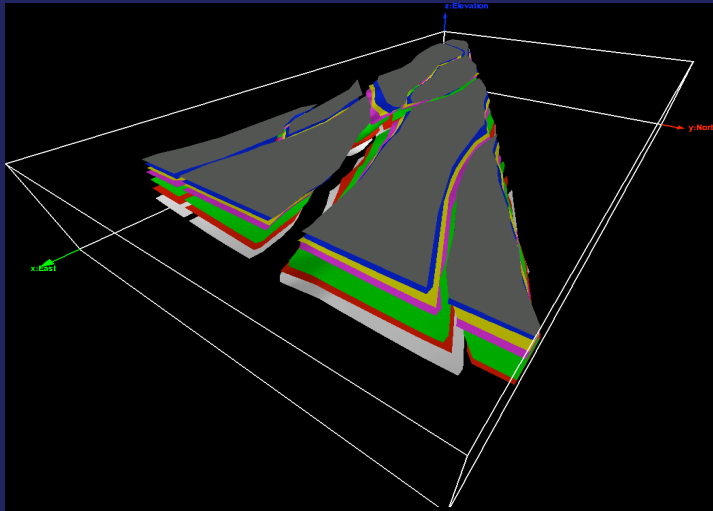
Cross-line through 3D seismic amplitude data,
with horizon interpretations (Data courtesy Steeghs et al, 2000)

The numerous faults have been interpreted as synsedimentary deformation, resulting from the load of the overlying sediments. Pressure release contributed to fault initiation and subsequent fluid escape caused the polygonal fault pattern.

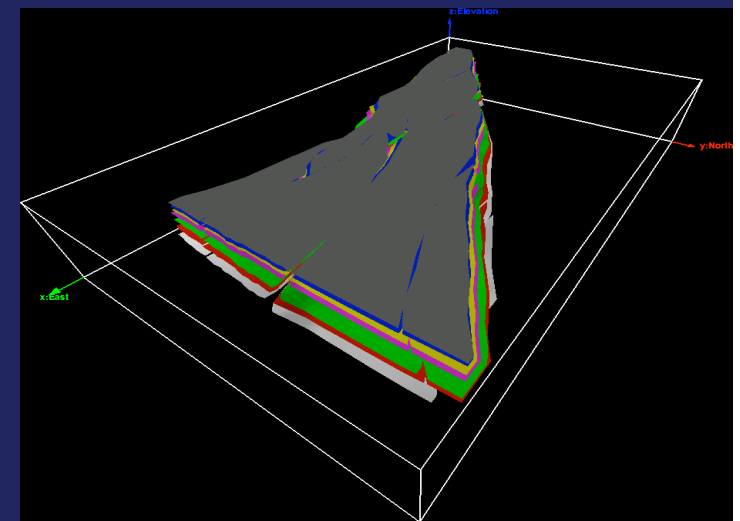


Combined volume dip/azimuth display at $T = 1188$ ms.
Volume dip is represented by shades of grey. Shades of blue indicate the azimuth (the direction of dip with respect to the cross-line direction).

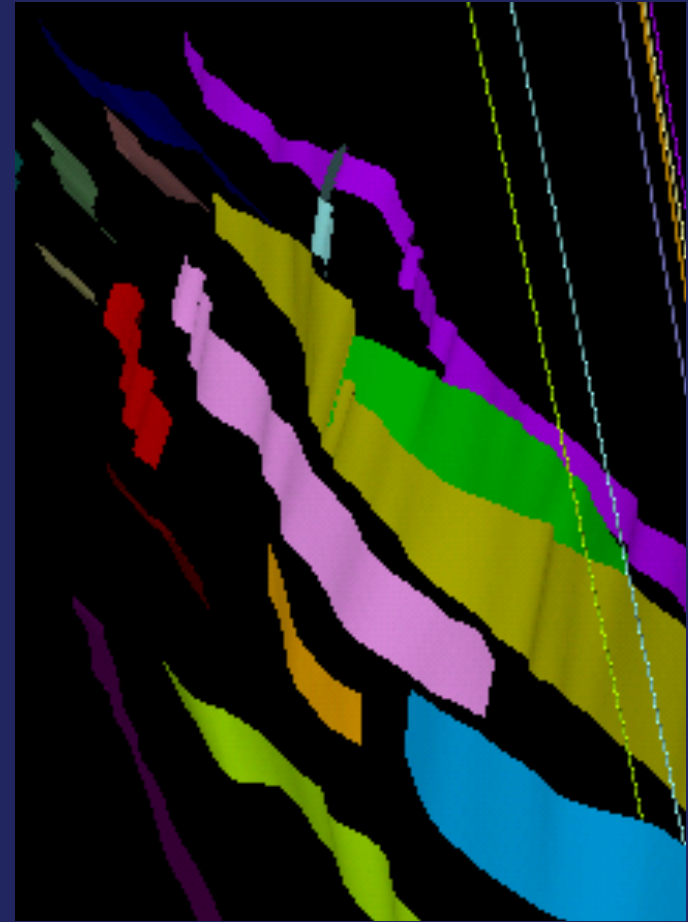
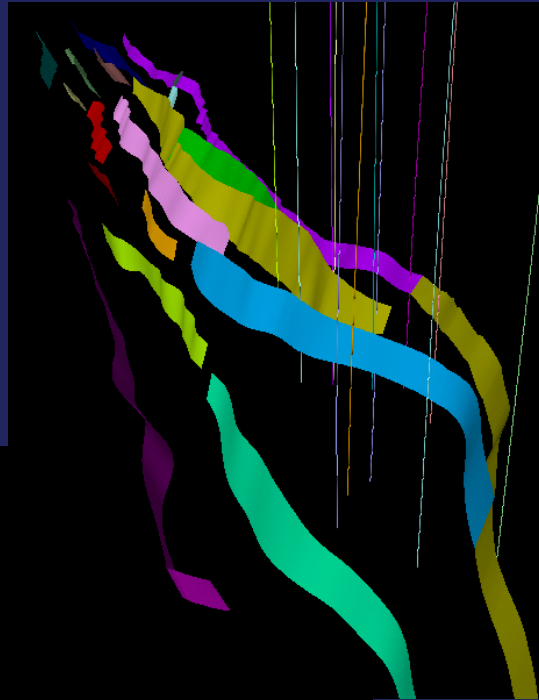
Fault modelling



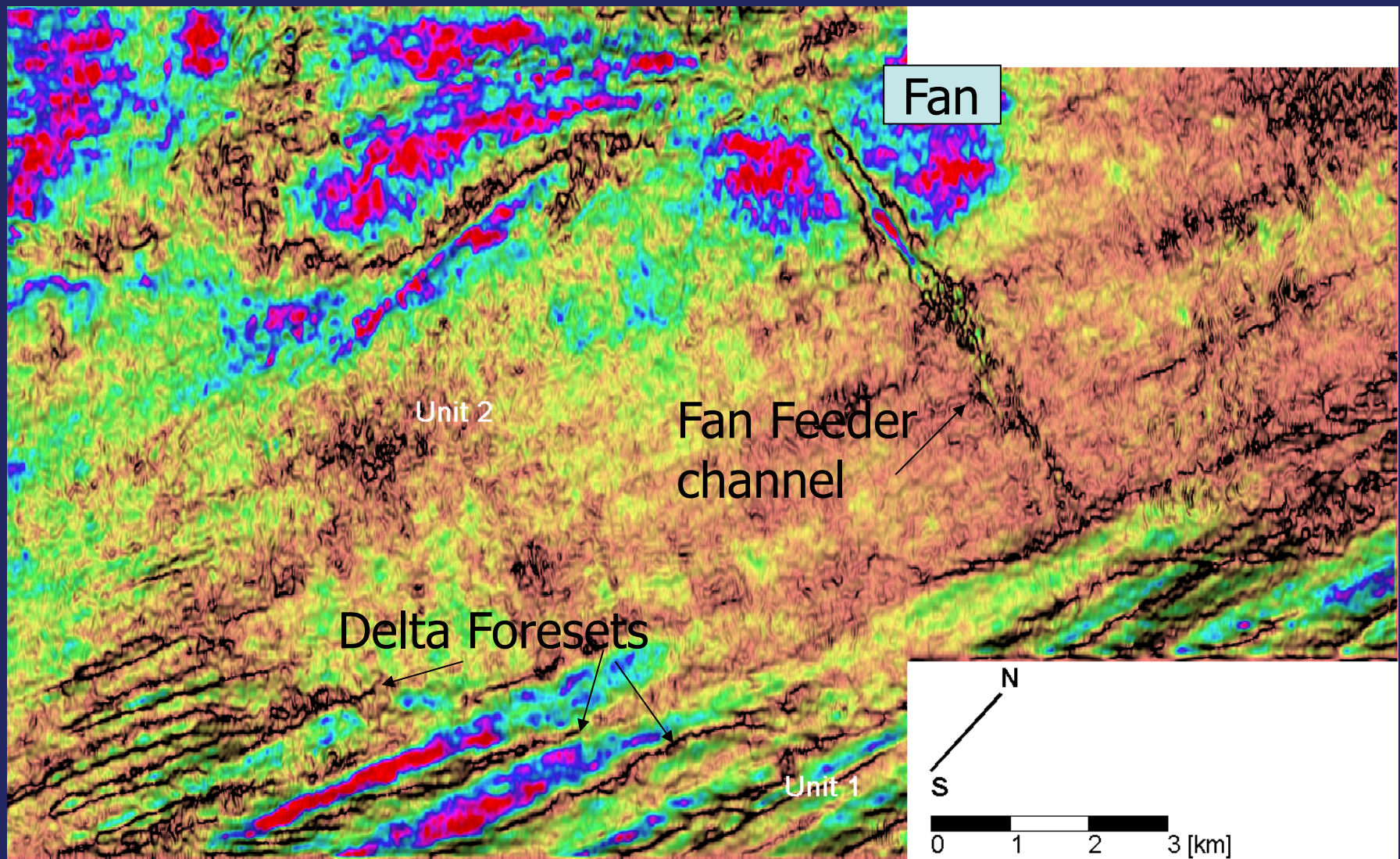
- from retrodeformation (geometries of restored depositional surfaces)



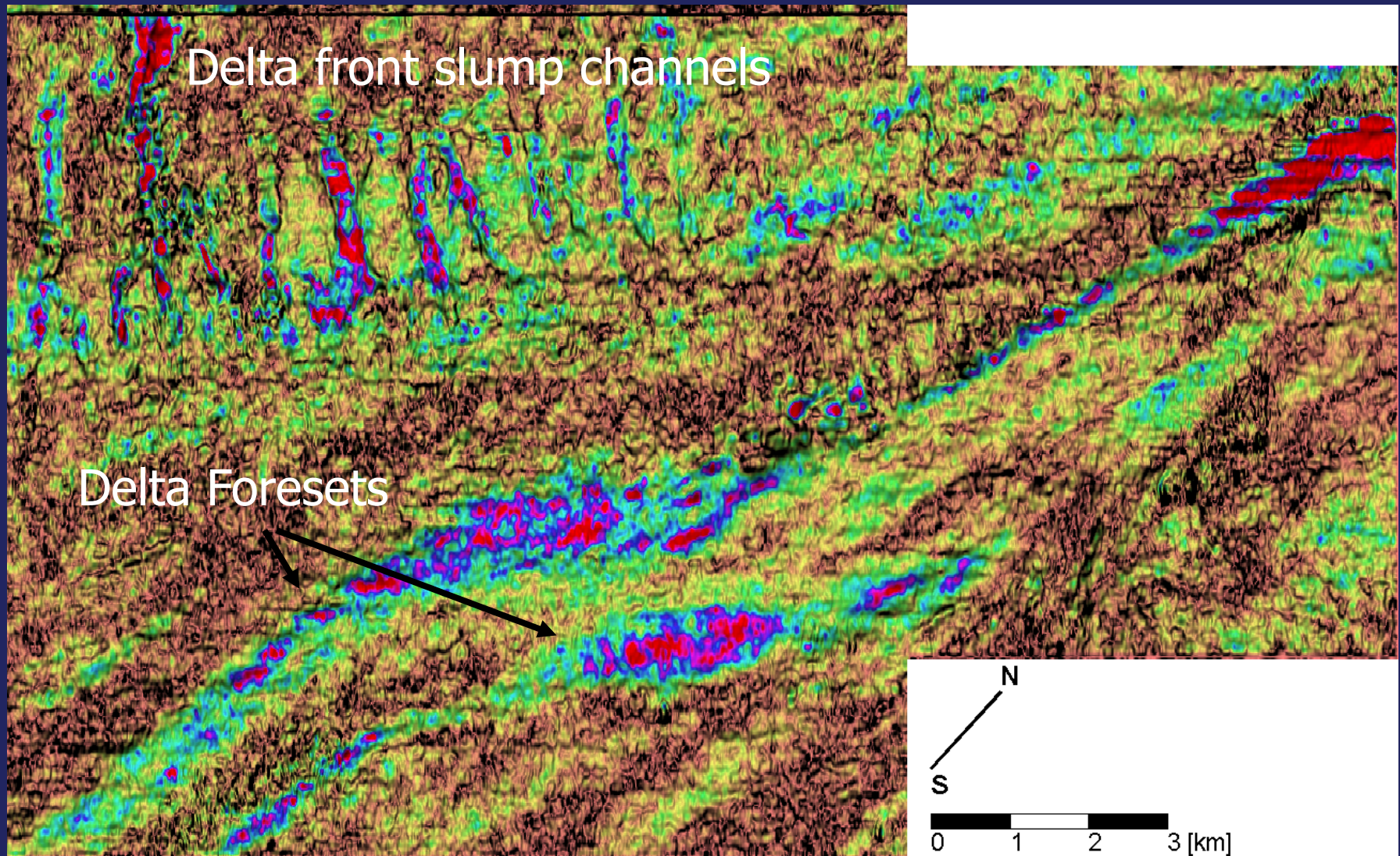
More fault modelling in Petrel



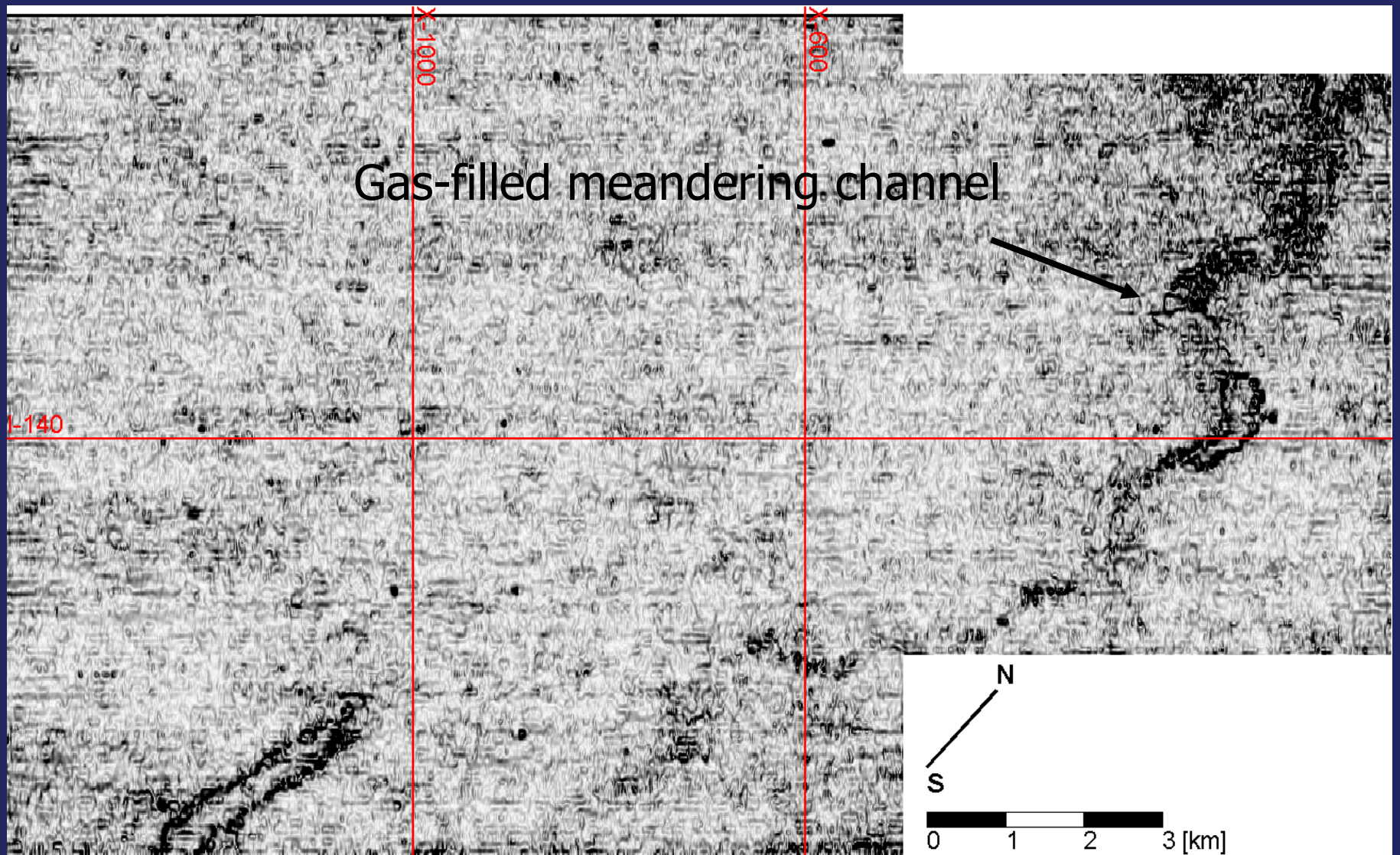
- Check plausibility of implied stress and strain fields



Combined volume dip / reflection strength slice at T=724 ms

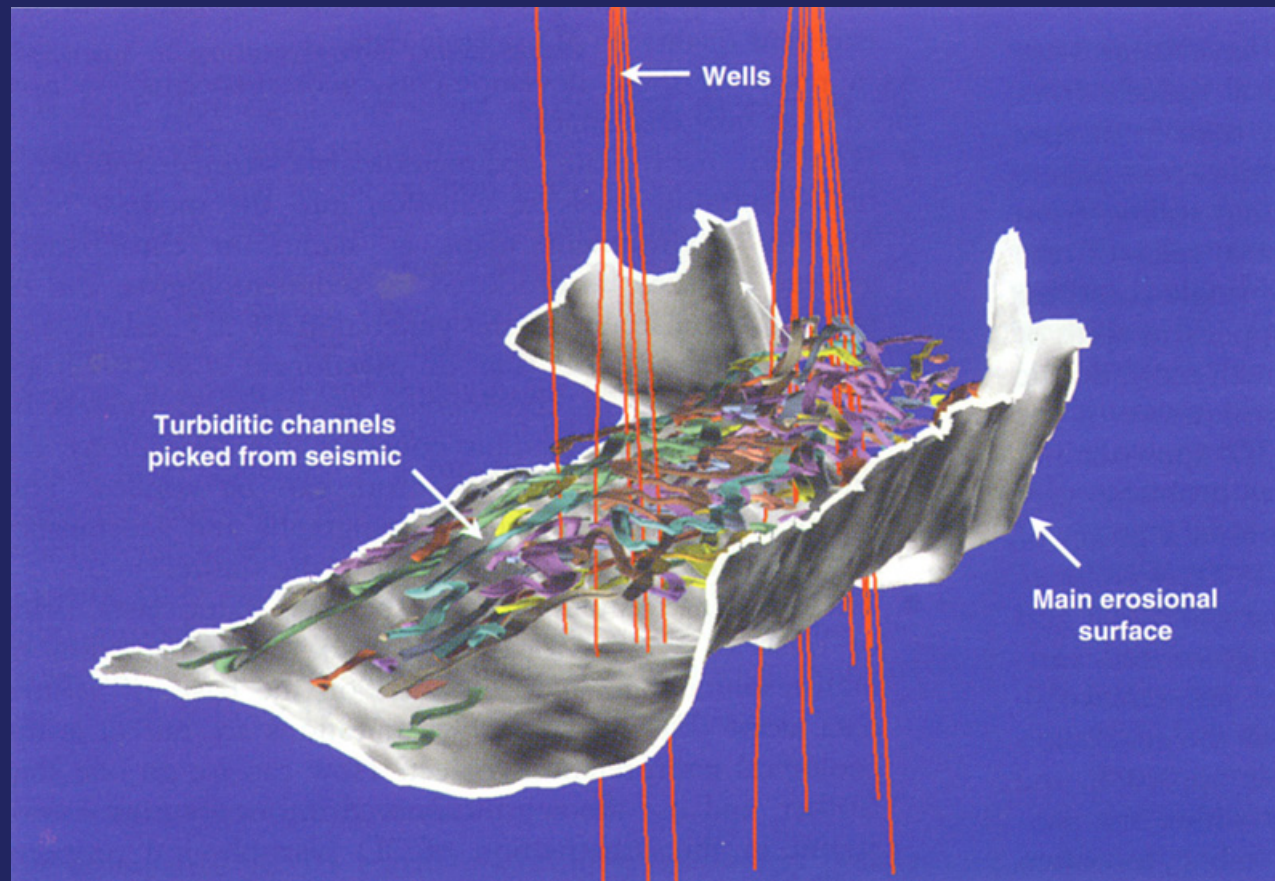


Combined volume dip / reflection strength slice at $T = 600$ ms



Combined volume dip / reflection strength slice at T= 92 ms

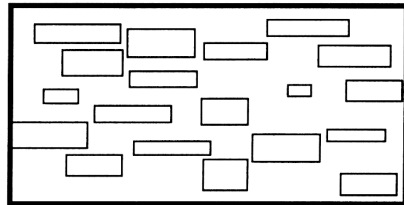
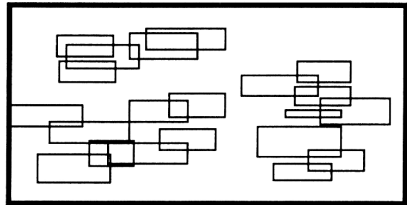
Deterministic sedimentary model from seismic attributes



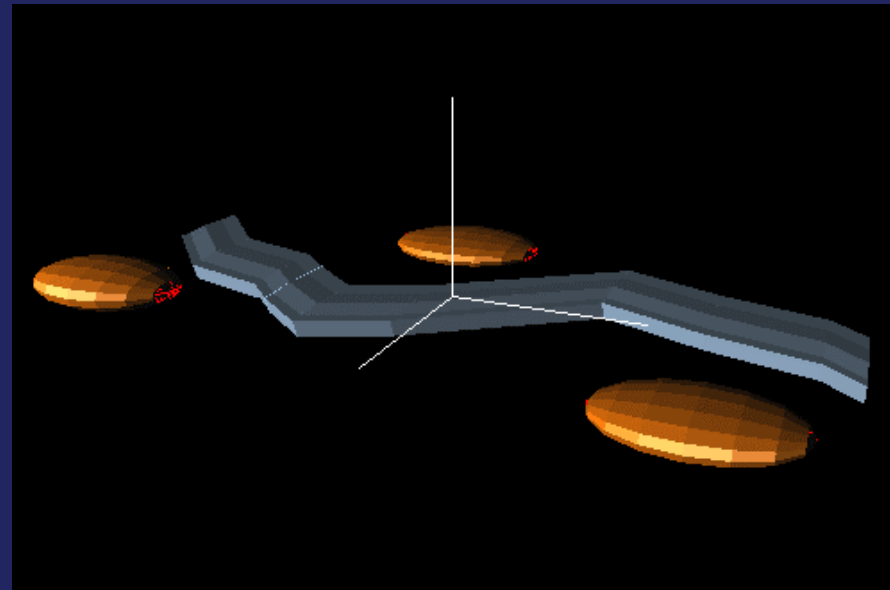
Object-based Stochastic Models

- Point process: spatial distribution of points (object centroids) in space according to some probability law
- Marked point process: a point process attached to (marked with) random processes defining type, shape, and size of objects
- Marked point processes are used to supply inter-well object distributions in sedimentary environments with clearly defined objects:
 - sand bodies encased in mud
 - shales encased in sand

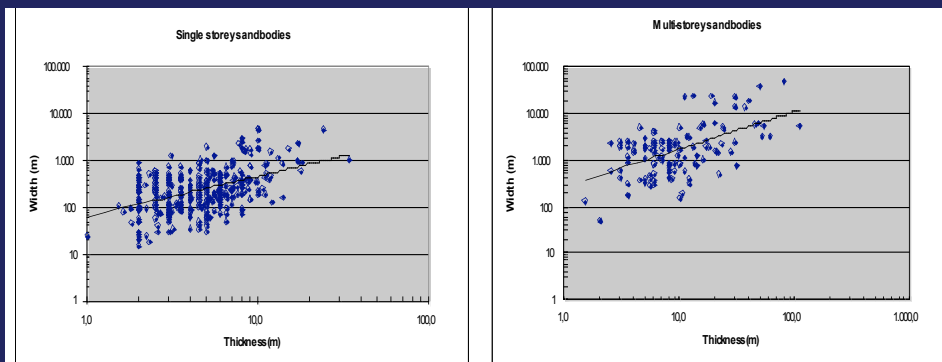
Ingredients of marked point process



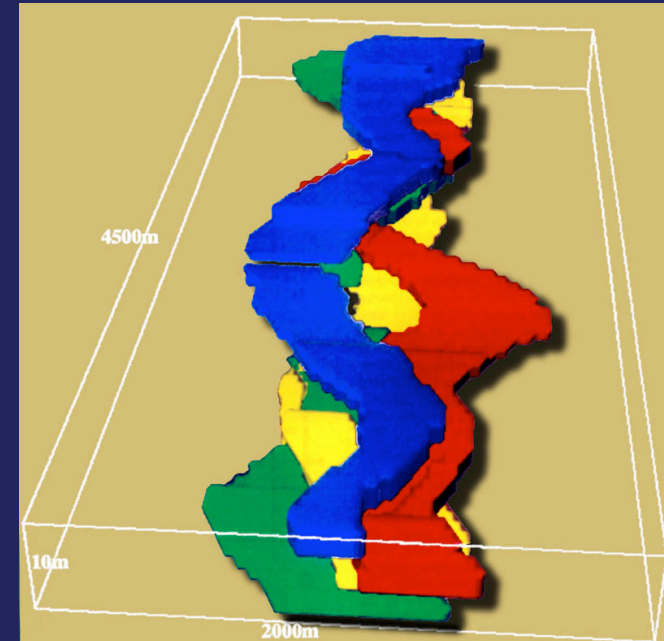
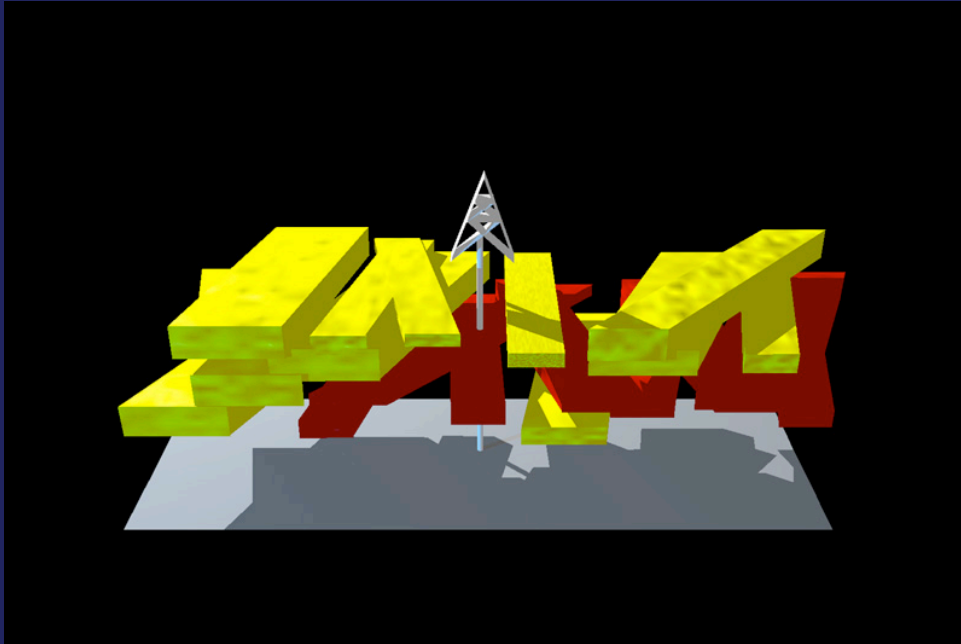
- Spatial distribution (degree of clustering, trends)
- Object properties (size, shape, orientation)



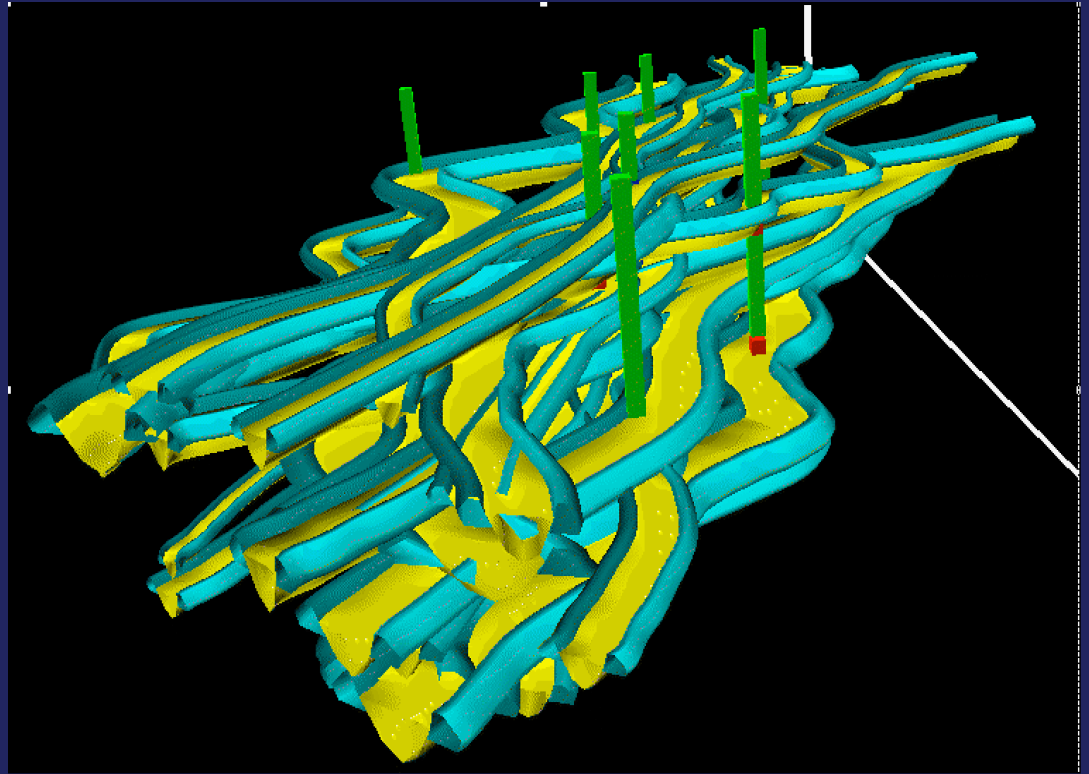
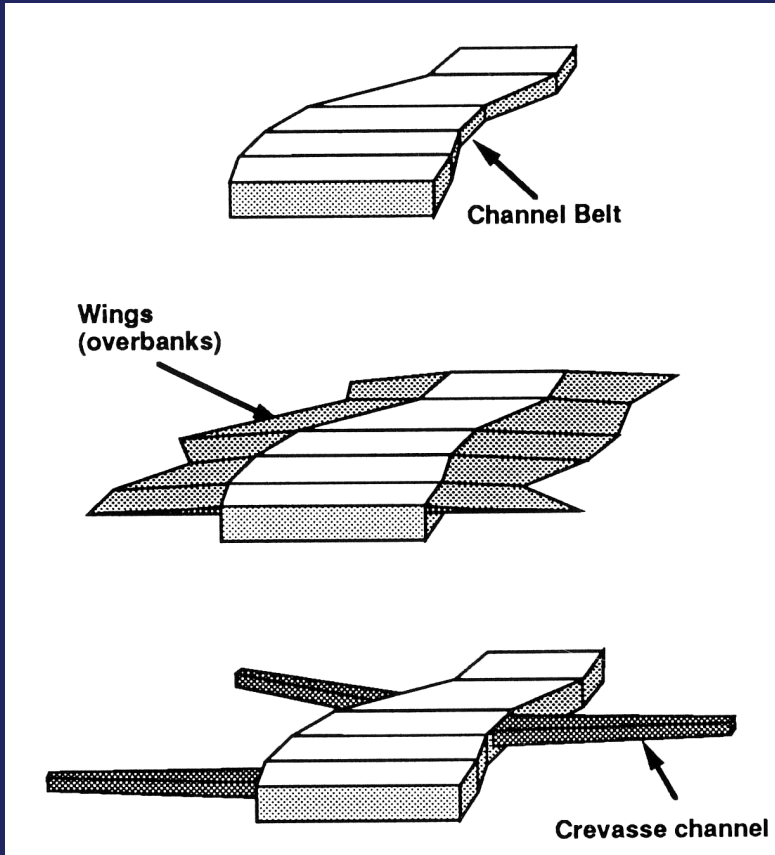
- Object-based stochastic geological model conditioned to wells, based on outcrop analogues



An example: fluvial channel-fill sands

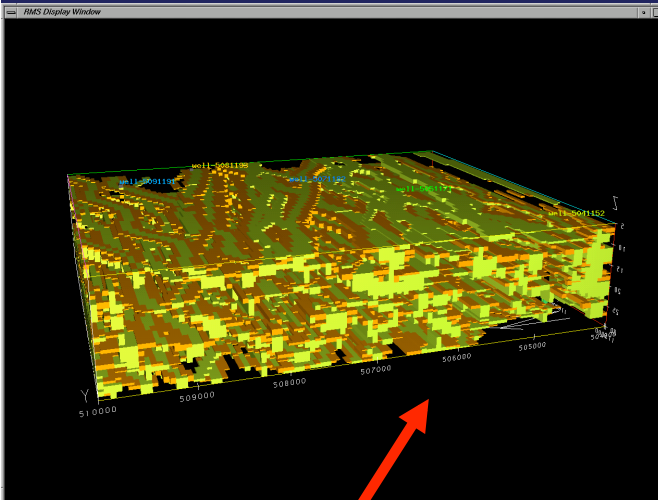


- Geometries have become more sophisticated, but conceptual basis has not changed: attempt to capture geological knowledge of spatial lithology distribution by probability laws

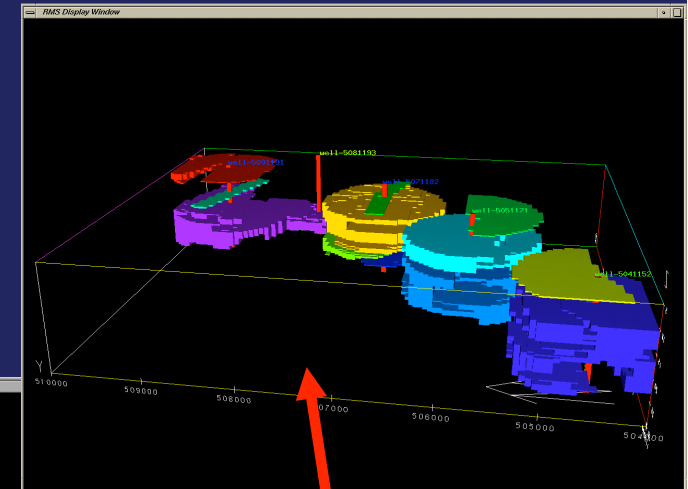
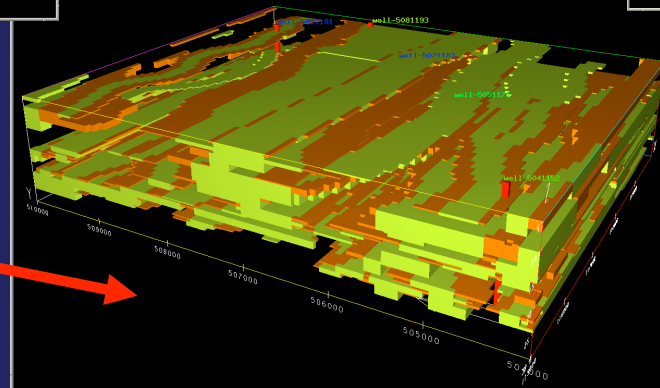


- Examples of shape characterisation:
 - Channel dimensions (L, W) and orientation
 - Overbank deposits
 - Crevasse channels
 - Levees

Exploring uncertainty of object properties (channel width)

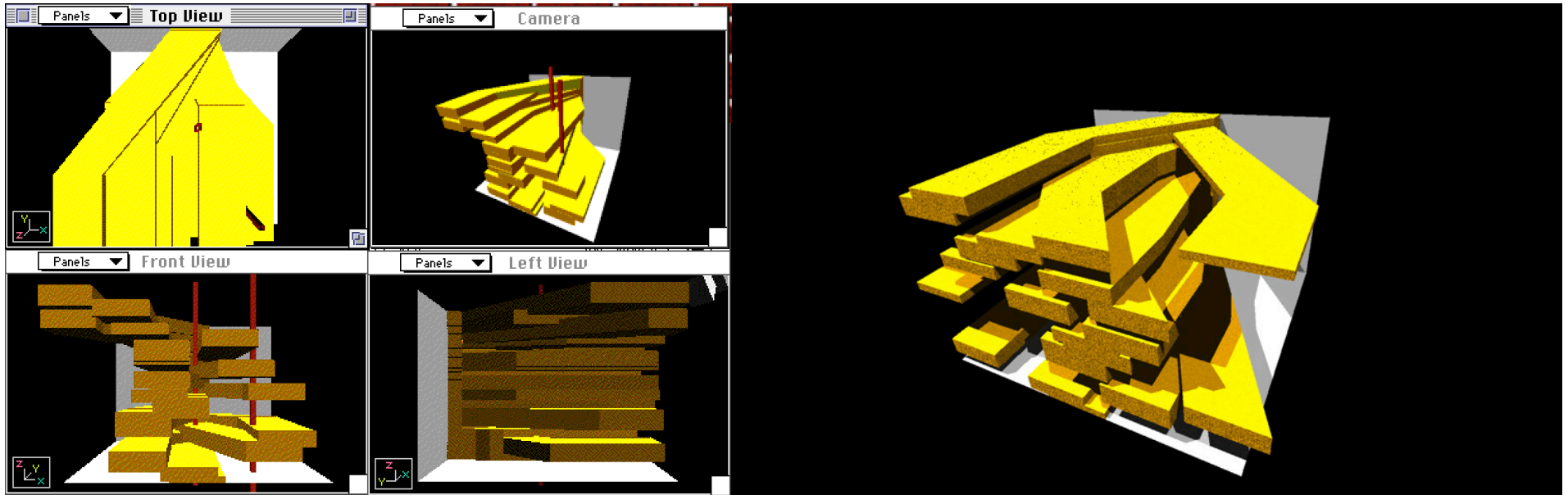


- $W = 100 \text{ m}$
- $W = 800 \text{ m}$

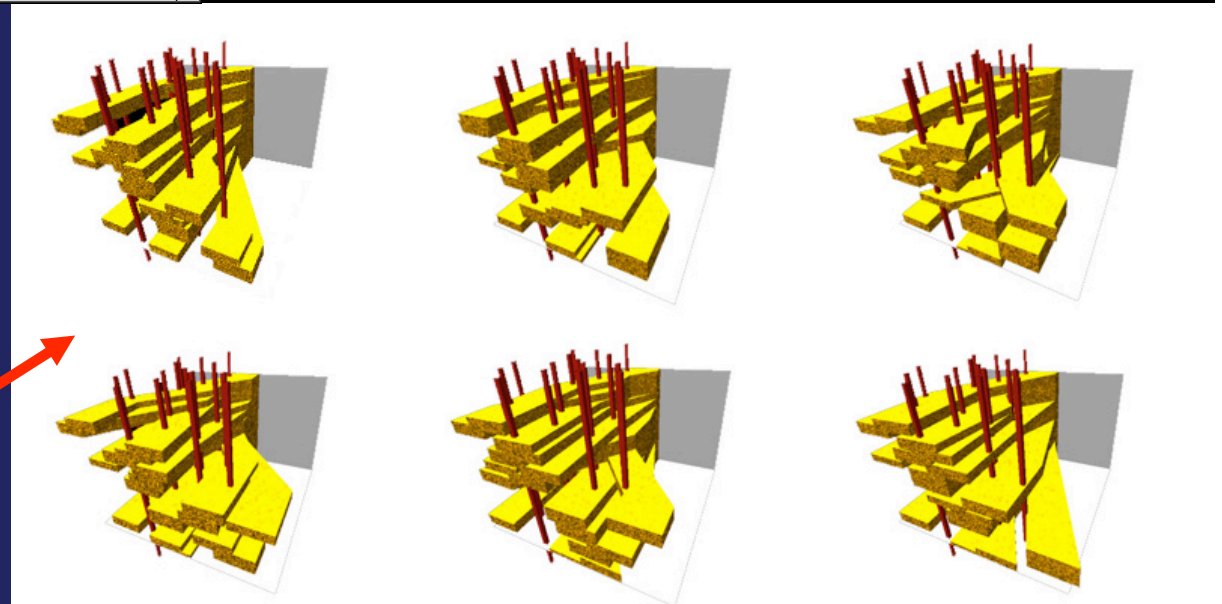


- $W = 800 \text{ m}$
- $R = 800 \text{ m}$

How can one quantify the differences between different realizations?



- Major step forward: object-based model of channel belt generated by random avulsion at fixed point
- Series of realisations conditioned to wells (equiprobable)



Stochastic Model constrained by multiple analogue data

- Extract as much information as possible from logs and cores (Tilje Fm. Haltenbanken area, offshore Norway).
- Use outcrop or modern analogue data sets for facies comparison and definition of geometries
- Only then 'Stochastic modeling' will begin

Lithofacies types from core

Example: Holocene Holland Tidal Basin

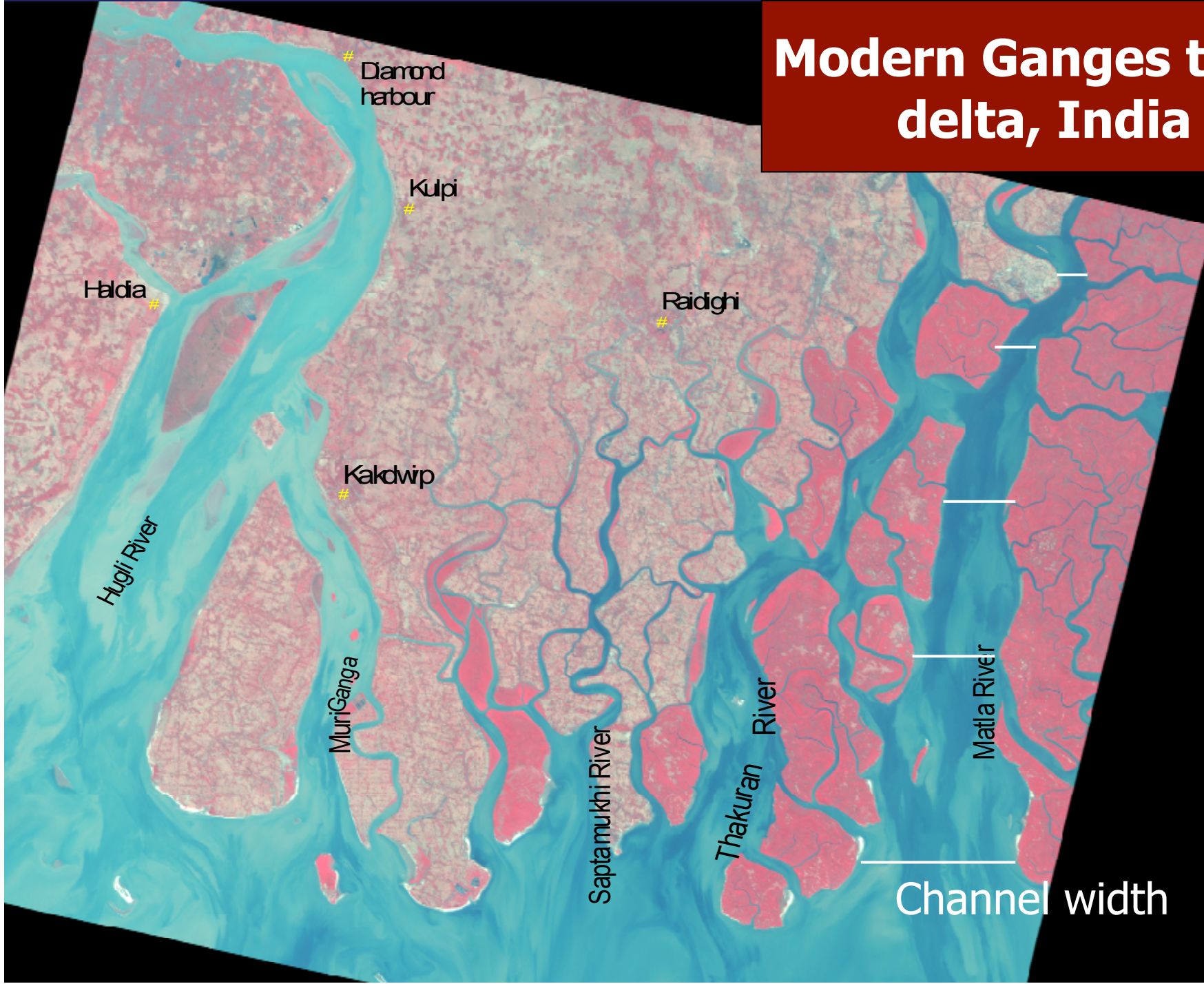
Tidal Channel

Tidal Flat

Interchannel



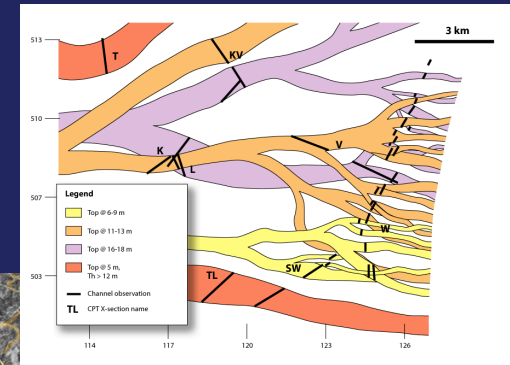
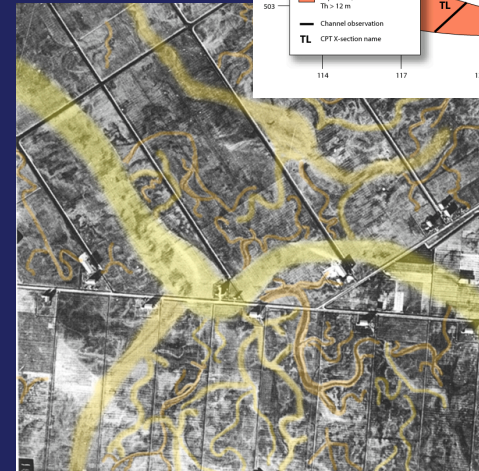
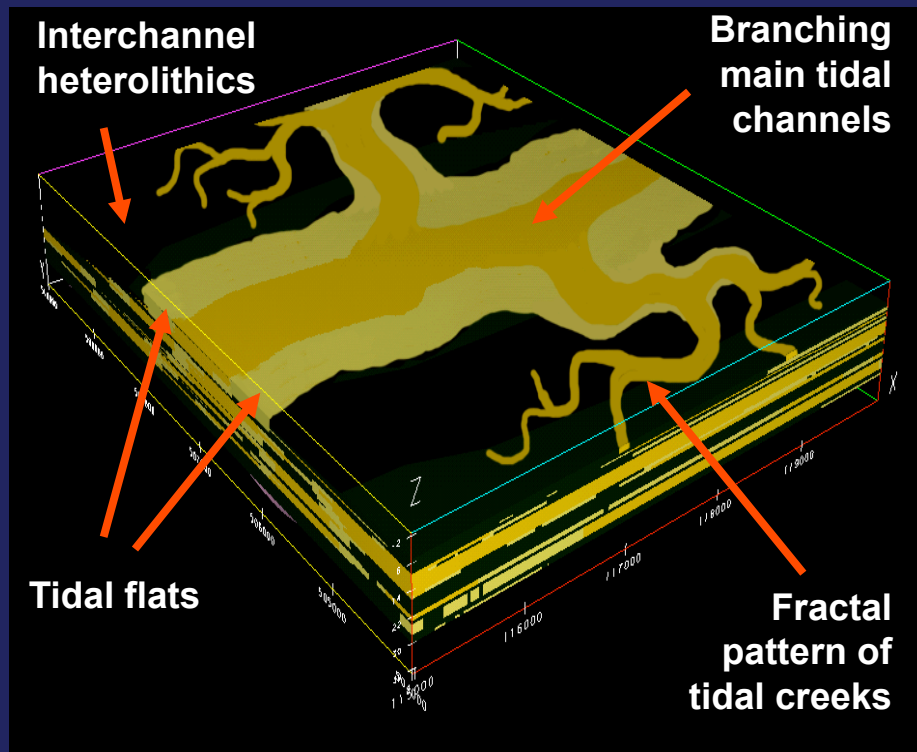
Modern Ganges tidal delta, India



distance 50 km

Channel width

Tidal channels

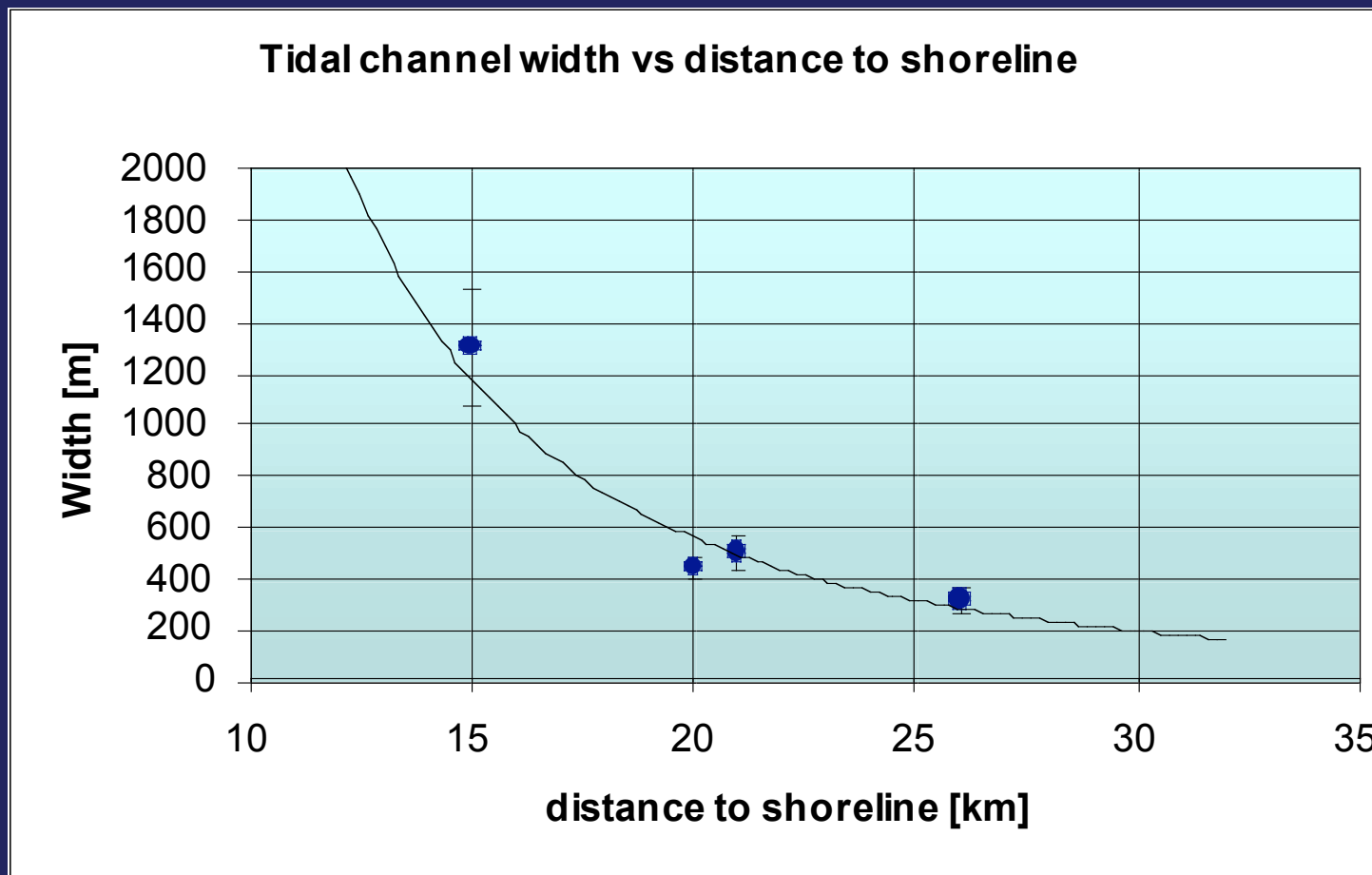


Conceptual model of tidal basin (aerial photos, detailed maps)

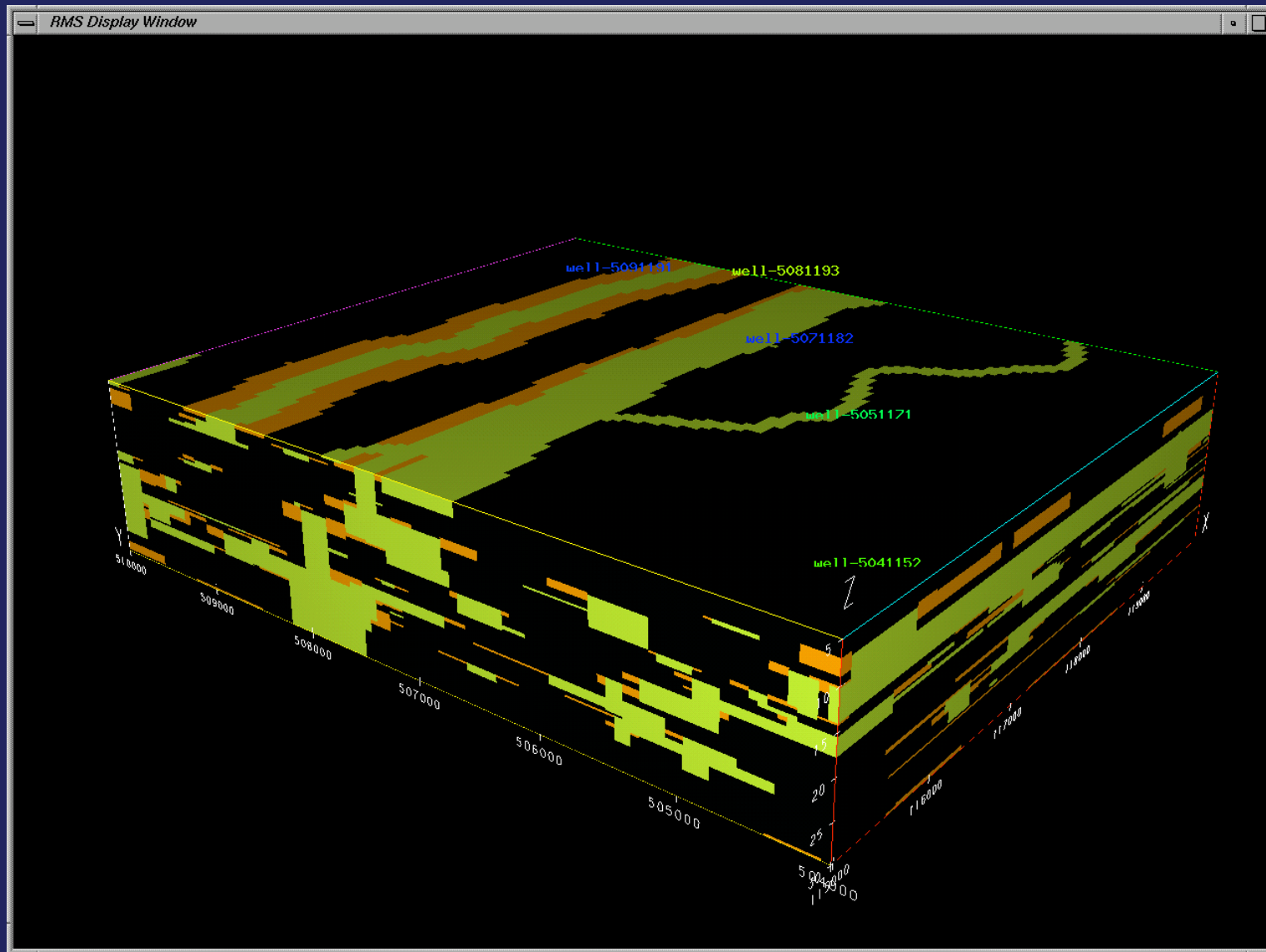
Growth of fractal channels is governed by a branching rule

Quantify the analogue data into relevant properties for reservoir model

- Channel width vs distance to shoreline



The resulting stochastical model.....



Some final remarks on stochastic/ deterministic models

- Stochastic Modeling should be data-driven modeling
- Both outcrop and modern systems play an important role in aiding this kind of modeling.

- Deterministic models are driven by seismic data.
- The better the seismic data acquisition techniques become, the more accurate the resulting model.

References

- Steeghs, P., Overeem, I., Tigrek, S., 2000. Seismic Volume Attribute Analysis of the Cenozoic Succession in the L08 Block (Southern North Sea). *Global and Planetary Change* 27, 245-262.
- C.R. Geel, M.E. Donselaar. 2007. Reservoir modelling of heterolithic tidal deposits: sensitivity analysis of an object-based stochastic model, *Netherlands Journal of Geosciences*, 86,4.