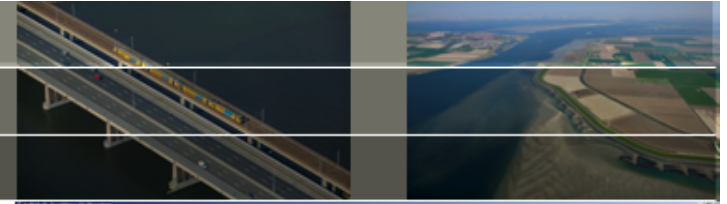
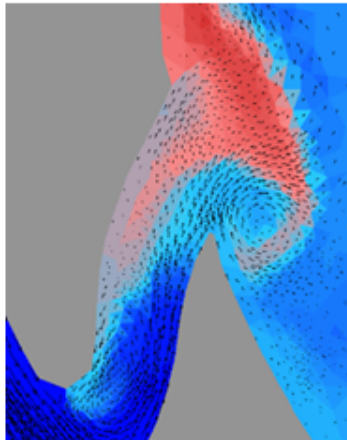
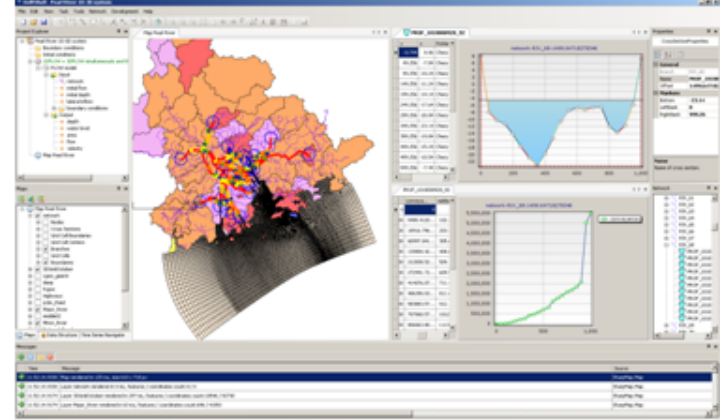


Bert Jagers



- Integration of Delft3D (2D/3D) and SOBEK (1D/2D)
 - from sewers to oceans
 - from rainfall runoff to delta deposits
 - from waves to ecological analysis
 - one open environment



- Development of unstructured mesh engines
 - more flexibility for representing complex geometries
- Interaction of morphology and ecology
 - integration of morphology, water quality & ecology
 - "riverland" by Maarten Kleinhans, Univ. Utrecht
- Simulating sedimentary deposits with Delft3D
 - scenario studies by Nathanael Geleynse, Joep Storms, ...



- OpenMI Association
 - improved OpenMI v2 interface

