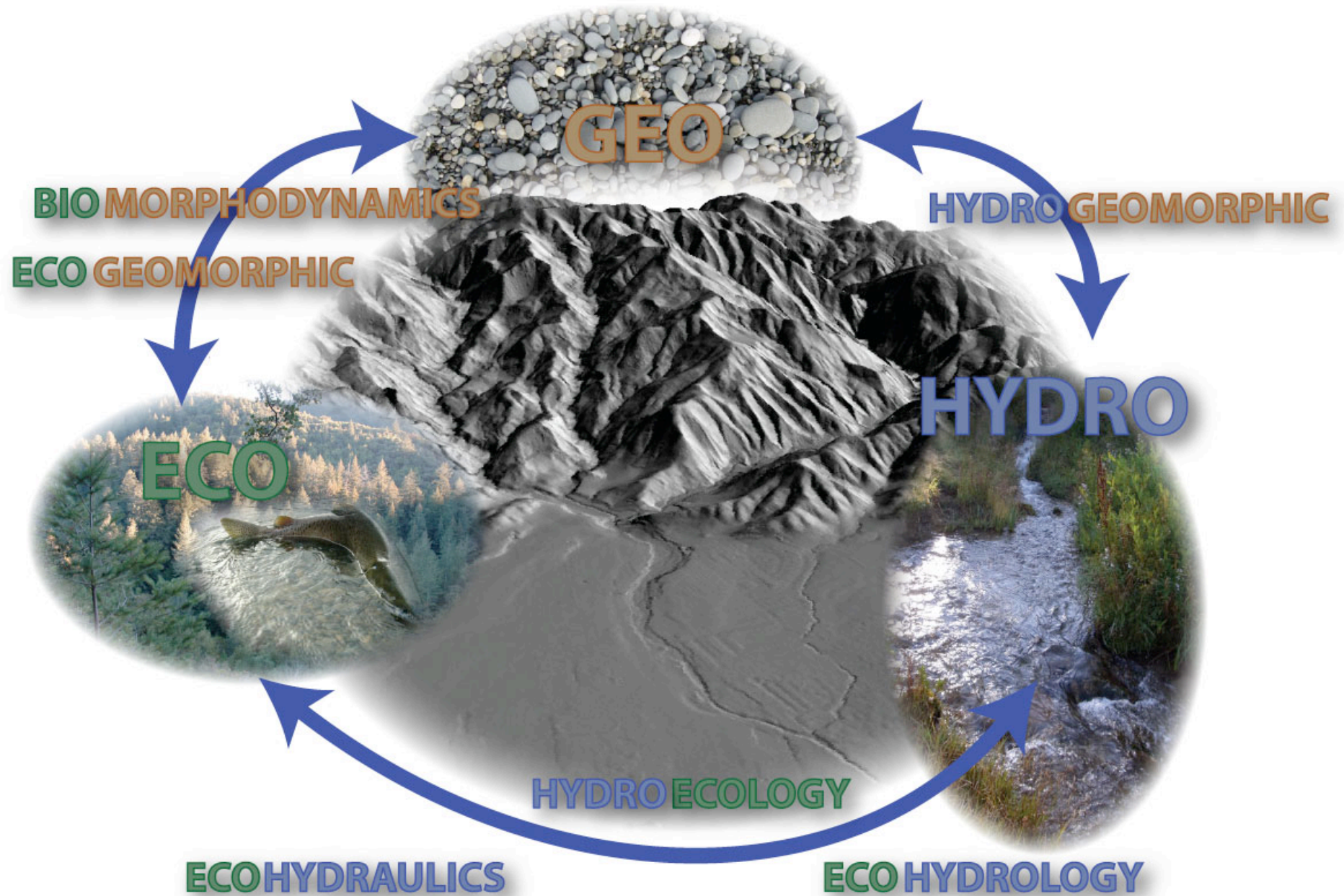
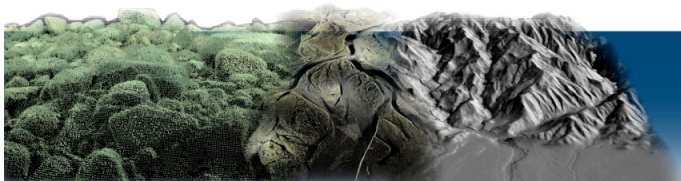


THE ECO-GEO-HYDRO MESS...



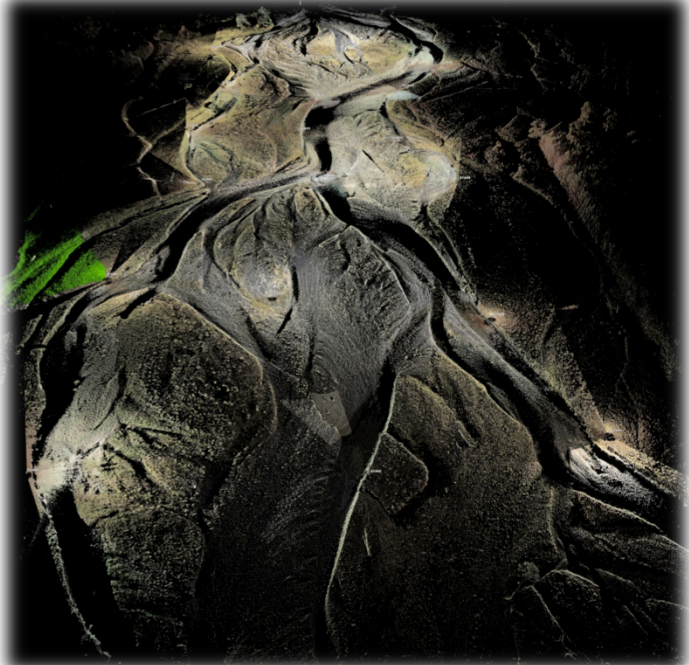
BEAVER and/or FISH AS AGENTS

- At what time scale do ecogeomorphic dynamics produce a population level response?
- How does geomorphic response vary in absence/presence of ecosystem engineers?



MONITORING?

- Even if we can see it between snapshots...



- Many responses not possible over monitoring time scales
-> Thus, we model

