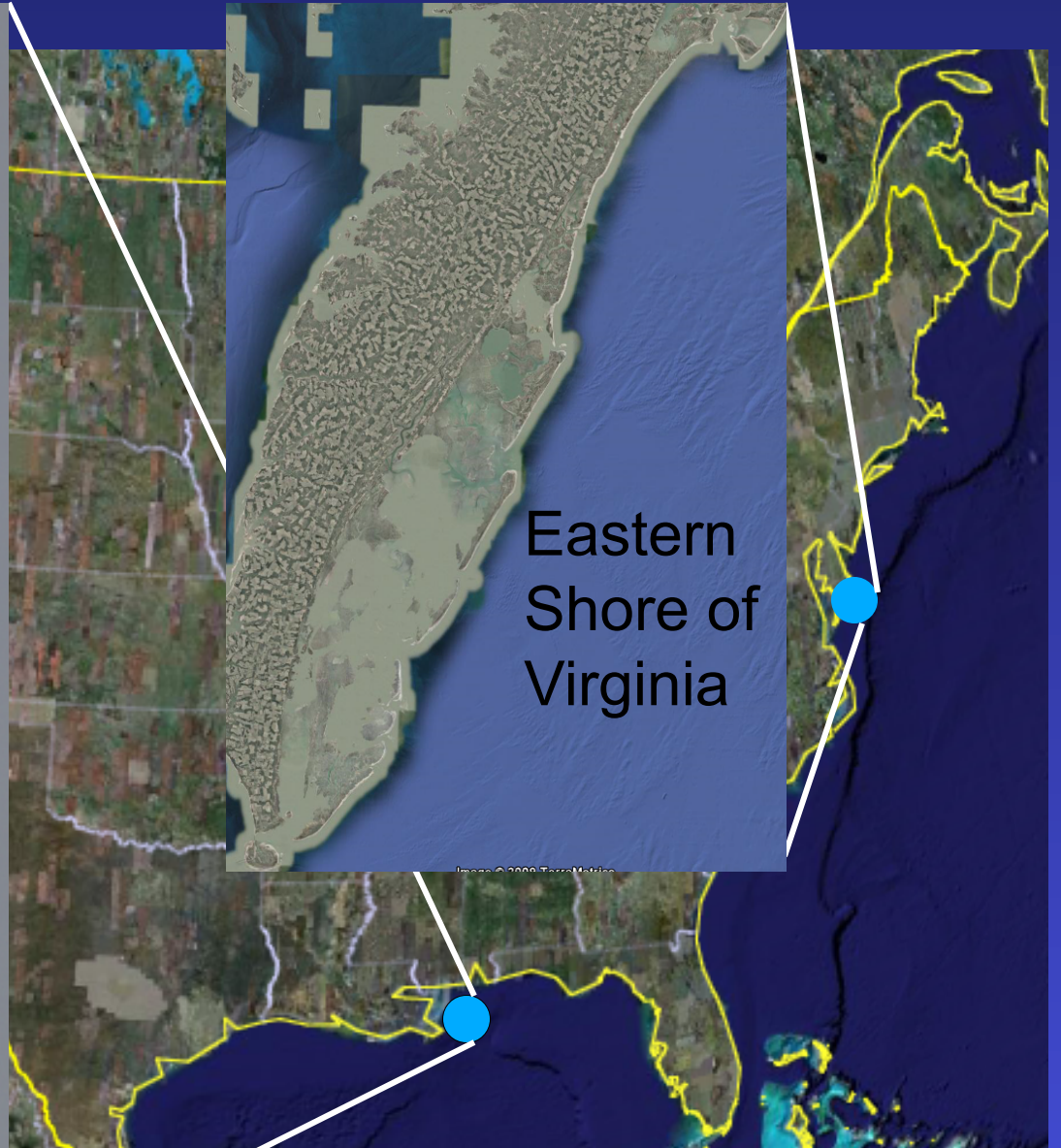


Barrier Island Evolution and Marsh Progradation

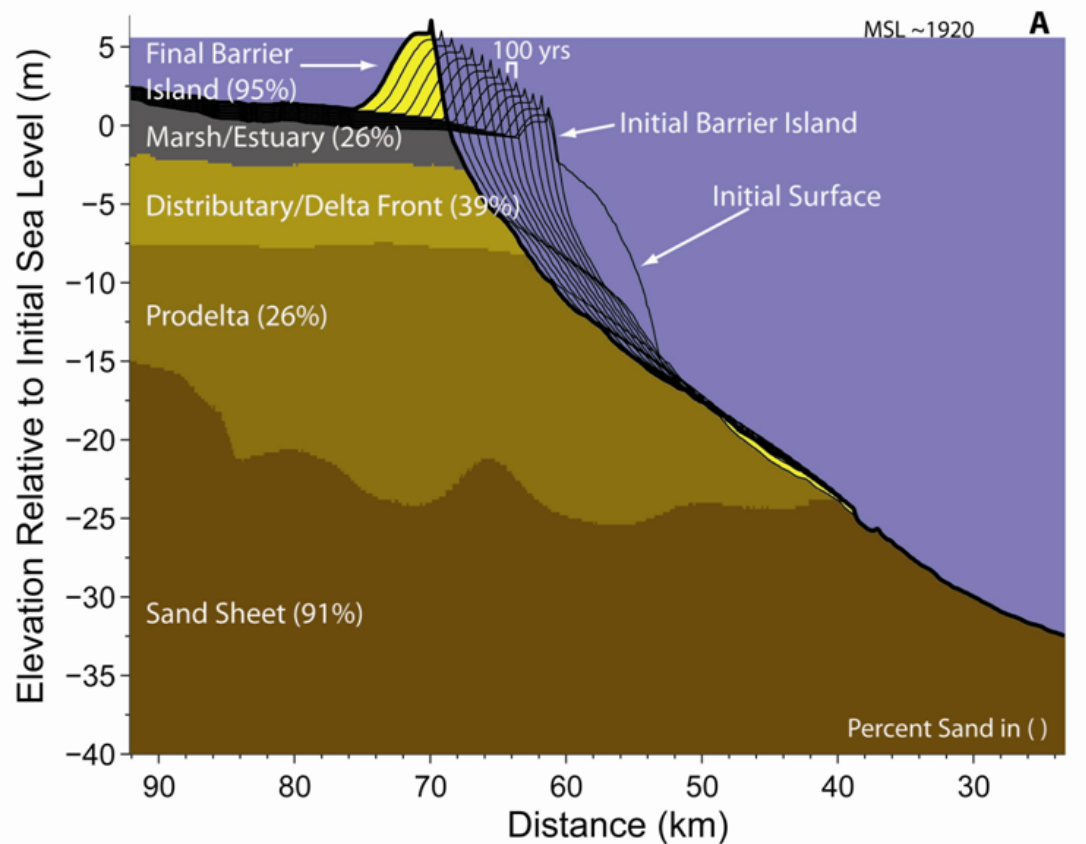
Chandeleur
Islands, LA

After Ike
(2009)

Before
Katrina
(2005)



Moore (Univ. of VA) and Fagherazzi (Boston Univ.)



GEOMBEST
barrier island evolution

marsh progradation

Brad-
Close-
ups- but
you
probably
won't
want
this...

